

Landslide Disaster Hazard Map

In March 2019, based on the Sediment Disasters Prevention Act, the Tokyo Metropolitan Government designated two Landslide Disaster Caution Zones (one of which Landslide Disaster Special Caution Zone) in the Yanaka area. In addition, in September 2019, three of the designated cross-city areas in the Ikenohata area were designated as the Landslide Disaster Caution Zones. This hazard map was created so that the residents can "take actions to save lives" when a landslide is expected or actually happened due to heavy rain, etc. Check regularly as to where and how to evacuate, and be prepared for the emergency.

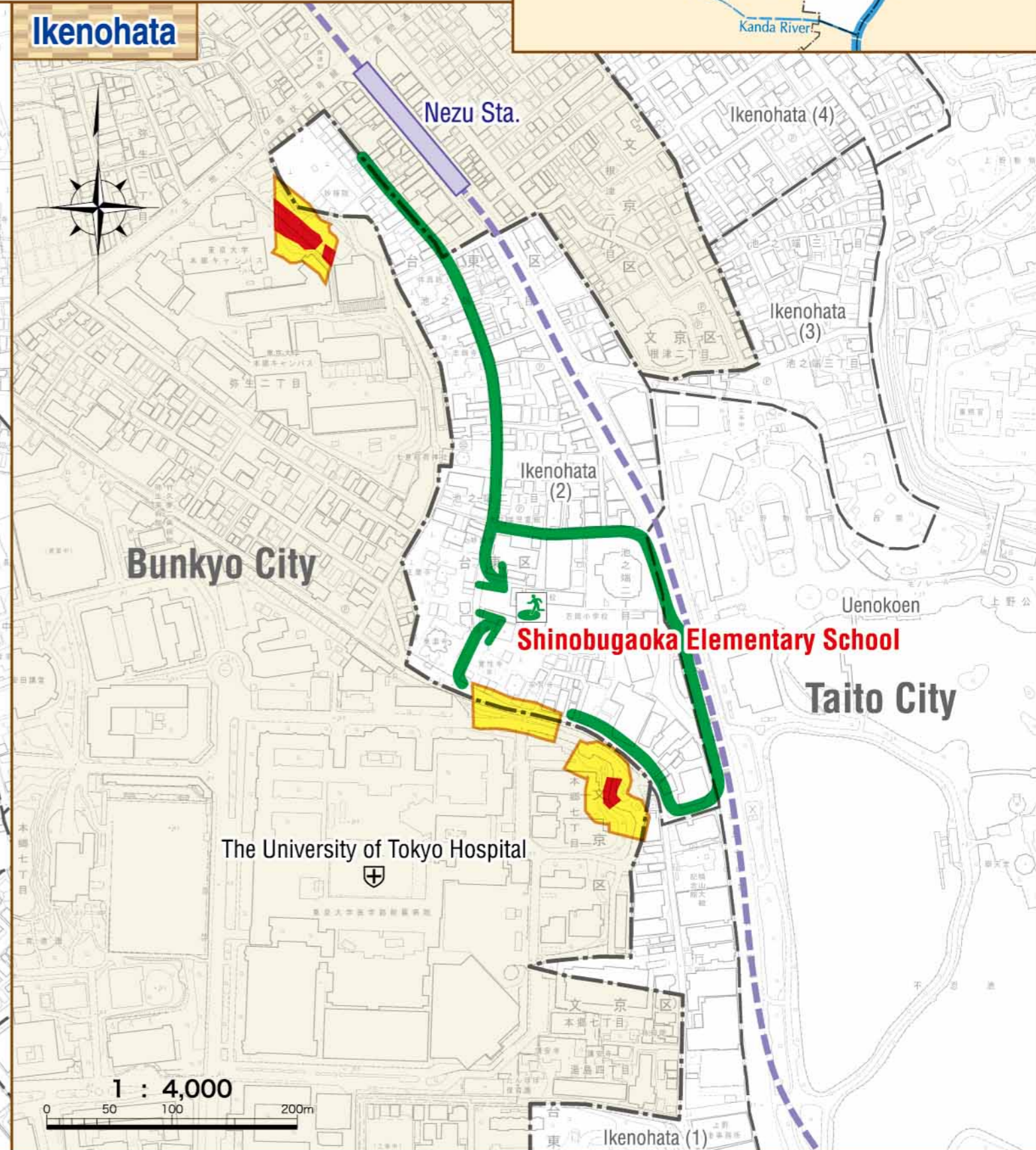
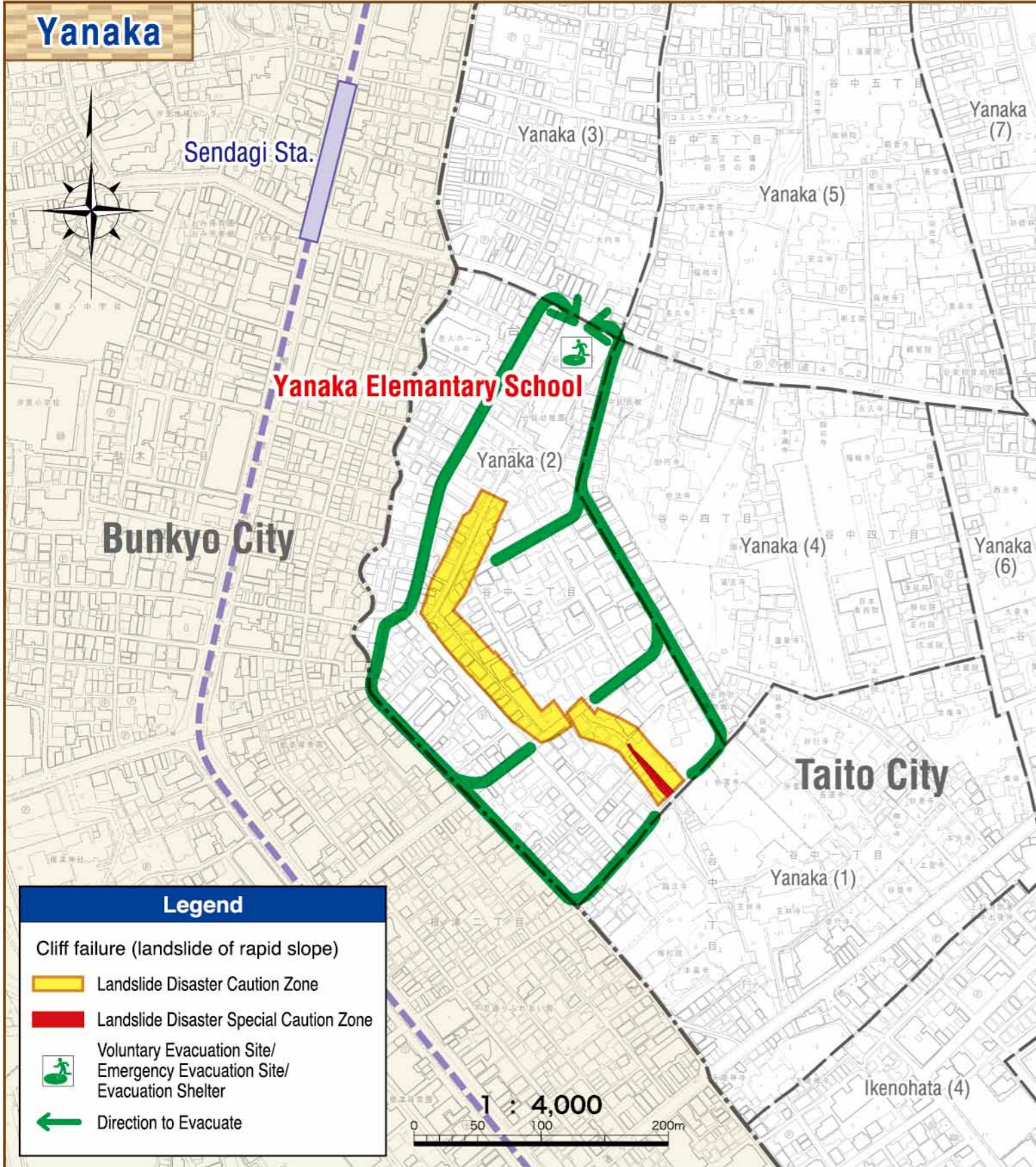
March 2022, Taito City

Inquiries on "Taito City Landslide Disaster Hazard Map"

Taito City Crisis & Disaster Management Section ☎03-5246-1092

Inquiries on structural control

Building Division ☎03-5246-1335



What is a landslide disaster?

There are three phenomena of landslide disaster: mudslide, cliff failure (landslide of rapid slope), and earth slide. Of those phenomena, Taito City has risks of cliff failure (landslide of rapid slope) caused by typhoon, heavy rain, loosened ground surface due to long rain, earthquake, etc. A cliff failure (landslide of rapid slope) refers to a sudden slide of a rapid slope area.

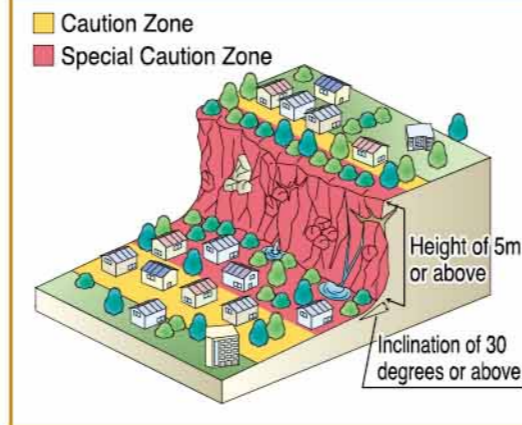
Landslide Disaster Caution Zone (Yellow Zone)

An area where risks of damages to the residents' lives or bodies are recognized in case of a landslide disaster. The hazard is informed to the public while a warning and evacuation system is implemented.

◆ Designated scope of cliff failure (landslide of rapid slope)

- Area with the inclination of 30 degrees or above, and height of 5m or above
- Area with the horizontal distance from the upper end of the rapid slope within 10m
- Area within twice the height of the distance from the lower to the upper end of the rapid slope (50m if the distance is longer than 50m)

Cliff failure (landslide of rapid slope)



Landslide Disaster Special Caution Zone (Red Zone)

Area inside the Yellow Zone (Landslide Caution Zone) where risks of severe damages to the residents' lives or bodies are recognized due to building damages in case of a landslide disaster. Certain developmental activities are on an authorization basis and building structures are regulated.

Collect information

Various information is available at times of disaster. Always try to obtain the latest.

Taito City official website
<https://www.city.taito.lg.jp/>

Outdoor speakers for emergency administration radio system phone answering service
 03-5246-4057

TV (digital data broadcasting) / radio, etc.

Early warning e-mail "Area Mail"

Taito City disaster prevention weather information e-mail newsletter

Taito City official Twitter account
 Taito City official LINE account

Taito City disaster prevention app
 for iPhone for Android

Categories of evacuation information / Timing of issuance

Alert Level	Information to encourage action	Useful information for voluntary actions <small>(*Can be checked on the JMA website)</small>	Emergency actions etc.
Alert Level 5	Emergency Safety Measures (Issued by the City)	Level 5 equivalents: (Heavy rain emergency warning [Landslide disaster])	● The disaster is already here. Take the best action possible to save your life!
Alert Level 4 Everyone should evacuate	Evacuation Instruction (Issued by the City)	Level 4 equivalents: • Landslide alert information • Heavy rain warning (landslide disaster) hazard distribution (very dangerous) • Heavy rain warning (landslide disaster) hazard distribution (extremely dangerous)	● Evacuate immediately to your evacuation destination. ● If it appears difficult to move to a public evacuation site, evacuate to a safe place nearby or to a safer place within your home.
Alert Level 3 Elderly etc. should evacuate	Evacuation of the Elderly, Etc. (Issued by the City)	Level 3 equivalents: • Heavy rain warning (landslide disaster) • Heavy rain warning (landslide disaster) hazard distribution (alert)	● Those who take time to evacuate (the elderly, the disabled, infants and toddlers, etc.) and their supporters should evacuate. Others should prepare for the evacuation.
Alert Level 2	Flood Advisory Heavy Rain Advisory etc. (Issued by the Japan Meteorological Agency)	Level 2 equivalents: • Heavy rain warning (landslide disaster) hazard distribution (caution)	● Be prepared for the evacuation by checking your evacuating actions on a hazard map, etc.
Alert Level 1	Probability of Warnings (Issued by the Japan Meteorological Agency)		● Increase your preparedness for disasters.

When you evacuate... (Preparation for landslide disasters)

1 Early voluntary evacuation "evacuation by eviction"

Start evacuating before the weather circumstances get worse. When you run late for the evacuation, the risks to be affected by the disaster while evacuating will be higher. "Evacuation by eviction" is to move to a designated evacuation site or another safe place. **Evacuation by eviction is the fundamental method of evacuation from a landslide disaster.**

2 Caution points on evacuation routes

Call out to your neighbors and evacuate in a group of two or more if possible. Beware of gutters and manholes uncovered due to heavy rain. **Check in advance the circumstances of where you live and the safe evacuation routes.**

3 "Securement of indoor safety" when evacuating to the evacuation site (evacuation by eviction) has turned out difficult

"Securement of indoor safety" is to move to a safe indoor place. If you have no choice but cannot move to evacuation sites etc., evacuate to an upper floor of a robust building nearby. If even that is difficult, evacuate to a safer place within your home (place far from the cliff, 2nd floor, etc.).

Flow of evacuation

Home

[Note] Have the emergency essentials ready to go at places such as the front door, bedroom, etc., where it is easy to take them out.

- When the rain stops and there is no longer the danger of a landslide disaster, go home and check the circumstances there.
- When there are people having difficulties living at home due to the landslide disaster, emergency evacuation sites will turn into "evacuation shelters" as the base of life.

● Taito City will open the emergency evacuation sites for people who live around the Landslide Disaster (Special) Caution Zones when the danger of landslides are higher (when an evacuation information of Alert Level 3 or higher is issued). **Evacuate immediately when the emergency evacuation sites open.**

[Note] Taito City may open voluntary evacuation sites prior to the evacuation information of Alert Level 3 or higher, for those who have concerns for evacuating at home. If you are evacuating to a voluntary evacuation site, please bring your own supplies such as food.

Emergency Evacuation Site	
Facilities	Address
Yanaka Elementary School	Yanaka 2-9-16
Shinobugaoka Elementary School	Ikenohata 2-1-22

[Note] Check if there are safe places (friends or relatives' homes, accommodations, workplaces, etc.) besides the emergency evacuation sites that can be evacuation destinations.

Evacuation checklist: What to do

Check the following in advance with regards to the hazards of landslide disasters at your home, workplace, etc., and the nearby evacuation destinations:

- 1 Check with the map the hazard of landslide disasters at your home, workplace, etc.
- 2 Decide where to evacuate in case of emergency.
 []
- 3 Mark on the map the evacuation routes from your home, workplace, etc.

4 Write down the contacts of your family members and/or neighbors whom you evacuate with or will need assistance.

Name	Phone	Address / Workplace / School etc.