

Personal Edition

Taito City

Inland Inundation Hazard Map

~In case the drainage of sewerage etc. cannot keep up with heavy rain~

[Inundation Assumed Area]

About the Inland Inundation Hazard Map (Inundation Assumed Area)

This map, based on "Inundation Assumed Area Map of Kanda River Basin" (as of March 2018) and "Inundation Assumed Area Map of Sumida and Shingashi River Basins" (as of March 2021) created by the Tokyo Metropolitan Government, shows the assumed inundation area and height in the event where drainage of sewerage etc. cannot keep up with the heavy rain, as well as the evacuation sites in each area, so that it may help the residents' evacuation. The areas and the level of inundation damages are simulated based on the maximum assumable rainfall (total rainfall of 690mm / maximum rainfall in an hour 153mm) however, they may depend on the forms of rainfall and land. Therefore, it does not mean that heavy rain will always cause inundation damages shown on this map. When an evacuation is encouraged, the city will issue evacuation information such as evacuation instructions. Please pay enough attention to various weather and evacuation information.

What evacuation activity should you take?

Is inundation assumed in your area?

Yes
Do you live on the 2nd floor or above?

No

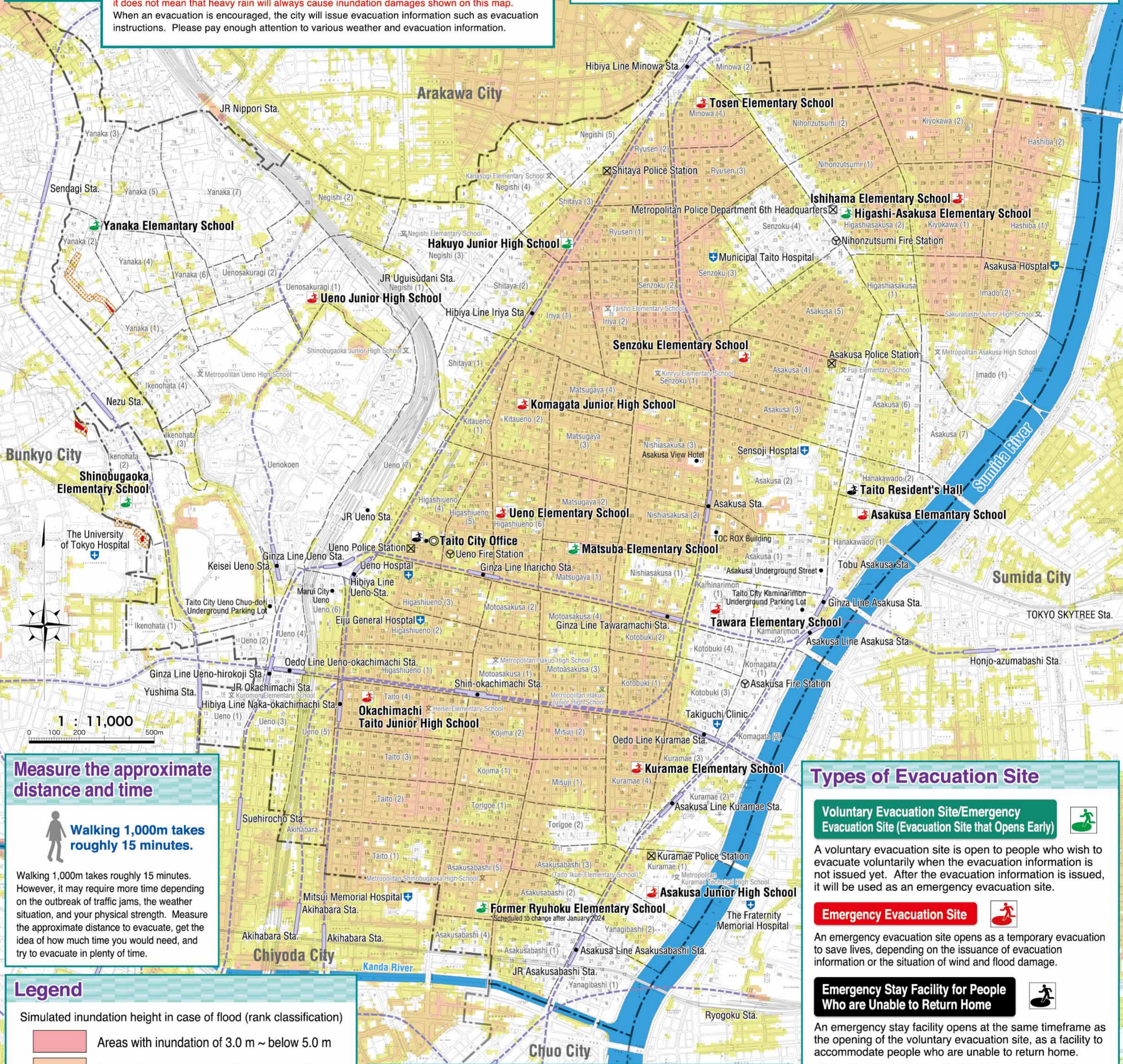
No

Yes

You need not evacuate. Be careful of flood in Arakawa and Kanda Rivers, storm surge, and landslide disaster. Even if damages are not simulated, if your area is lower than the surrounding areas, check the information from the Japan Meteorological Agency (JMA) and the City and evacuate as necessary.

When a piece of evacuation information is issued, there is a danger of disaster. Evacuate to the emergency evacuation site.

Even if an evacuation information is issued, shelter in place (evacuating to the 2nd floor or above). Stay alert to the flood in Arakawa River and the landslide disaster.



Measure the approximate distance and time

Walking 1,000m takes roughly 15 minutes.

Walking 1,000m takes roughly 15 minutes. However, it may require more time depending on the outbreak of traffic jams, the weather situation, and your physical strength. Measure the approximate distance to evacuate, get the idea of how much time you would need, and try to evacuate in plenty of time.

Legend

Simulated inundation height in case of flood (rank classification)

- Areas with inundation of 3.0 m ~ below 5.0 m
- Areas with inundation of 1.0 m ~ below 3.0 m
- Areas with inundation of 0.5 m ~ below 1.0 m
- Areas with inundation of 0.1 m ~ below 0.5 m

- Voluntary Evacuation Site / Emergency Evacuation Site
- Emergency Evacuation Site
- Emergency Stay Facility for People Who are Unable to Return Home

- City Office
- Fire Station
- Police Station
- Emergency Hospital
- Underground Mall and Other Facilities
- Landslide Disaster Caution Zone
- Landslide Disaster Special Caution Zone
- City Boundary
- Town/Chome Boundary
- River
- Subway/ Underground Railroad

Approximate Inundation Height That was Assumed

Color Codes of Inundation Height

3.0 m ~ below 5.0 m

1.0 m ~ below 3.0 m

0.5 m ~ below 1.0 m

0.1 m ~ below 0.5 m

Types of Evacuation Site

Voluntary Evacuation Site/Emergency Evacuation Site (Evacuation Site that Opens Early)

A voluntary evacuation site is open to people who wish to evacuate voluntarily when the evacuation information is not issued yet. After the evacuation information is issued, it will be used as an emergency evacuation site.

Emergency Evacuation Site

An emergency evacuation site opens as a temporary evacuation to save lives, depending on the issuance of evacuation information or the situation of wind and flood damage.

Emergency Stay Facility for People Who are Unable to Return Home

An emergency stay facility opens at the same timeframe as the opening of the voluntary evacuation site, as a facility to accommodate people who are unable to return home.

* Note: The above-mentioned facilities are opened and run by the City in order for people to secure temporary physical safety from flood. Unlike the evacuation shelters at times of earthquake, it is not a place to stay. Please bring your own water and food.

Take Shelter At Home

~To evacuate is to avoid danger~

In the event where drainage of sewerage etc. cannot keep up with the heavy rain, you can secure enough safety by evacuating to the 2nd floor or the above your house (sheltering-in-place), as the inundation will not last long. Also, although we have made progress in the anti-infection measures at evacuation sites, evacuating to an evacuation site still has risks of infection. By "sheltering in place", you can save yourself from disasters and infectious diseases at the same time.

Survival Kit / Stockpiles

Survival kit

Tips

- Put the things you will be taking with you when you evacuate in a backpack etc. so that you can take it out immediately.
- What you will need depends on each person or family, such as pairs of glasses, household medicine, and powdered milk. Prepare for the things that are necessary for yourself.

Valuables

- Cash
- ID
- Cards
- Spare keys (home, car, etc.)

Drink/food

- Drinking water (in plastic bottles)
- Emergency food (hardtack, canned food, etc.)

Information sources

- Portable radio
- Battery chargers of mobile phones, etc.
- Extra batteries
- Writing tools / memo pad

Sanitary goods

- Anti-infection goods (masks, etc.)
- Tissue paper / wet wipes
- Portable toilet

Daily supplies

- Flashlight (with batteries set)
- Cotton work gloves / leather gloves
- Towels / furoshiki (wrapping cloth)
- Plastic bags
- Utility knife
- Raincoat / rain gear / basic protection against cold
- Extra clothes / slippers
- Disposable body warmer

Stockpiles

Tips

- When a disaster occurs, the lifeline will be cut down and the logistics stop. You will not be able to lead a daily life. In addition, the top priorities in the first 72 hours of a disaster outbreak are fire extinguishment and life saving; other supports from the government will take time.
- Keep stockpiles per your or your family's situation at all times.
- Keep your daily food on stock rotation (see right) so that you'll be able to eat what you always eat, even at times of emergency.

Drink/food

- Drinking water
- Rice / instant rice
- Vacuum-packed food / canned food / dried food / seasoning

Things you need when you eat

- Paper plates / paper cups / disposable chopsticks
- Food wraps
- Can opener / utility knife
- Plastic water tank
- Gas cartridge tabletop stove / extra gas cartridge

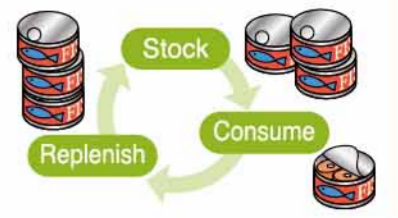
Daily supplies

- Toothbrushes / oral care goods
- Clothes (seasonal ones) / blankets
- Blue tarps (to prevent leaking of rain)
- Tools (crowbar, hammer, etc.)
- Duct tape / permanent marker
- Plastic bags (small/medium/large) / handbag
- Newspaper (can be used in many ways)
- Towel
- Batteries
- Candles
- Cardboard
- Masking tape
- Portable toilet

Prepare for at least 3 days' (preferably 1 week's) worth of stockpile.

Stock daily by stock rotation

- "Stock rotation" is to have extra amount of food you eat daily and replenish the amount you have used to be prepared for disasters. In this way, you will be able to spend a close-to-daily life even in disaster, while keeping the stockpile fresh.



Support for emergency supply purchases

20% discount is available for emergency supply purchases. For more information, please refer to the flyer shown on the right, distributed at the Taito City Crisis & Disaster Management Section (10th floor of the City Hall), municipal offices, district centers, etc. (The design may depend from time to time.)



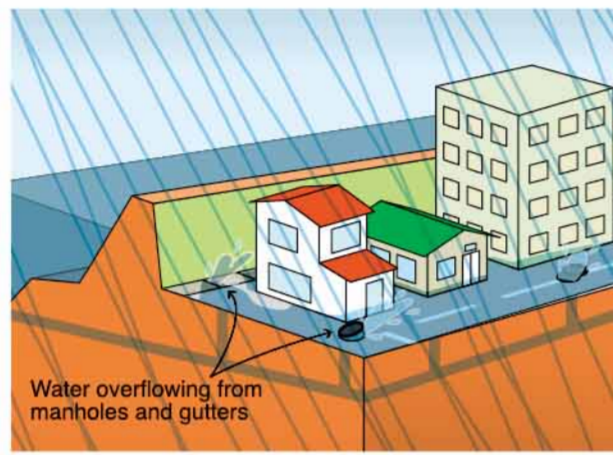
Taito City joins forces with Tokyo Katsushika Welfare Factory to offer support for emergency supply purchases.

Inland Inundation

A phenomenon that takes place in urban areas where most of the ground surface is covered with asphalt. When a localized heavy rain falls in a short period of time, drainage of sewerage etc. cannot keep up with the heavy rain and result in the inundation of buildings, land, and roads.

Features

- Short period of time from rainfall to the outbreak of inundation damage.
- Inundation will occur even at places far from the river.
- Inundation is low and its duration is short as well.
- Taito City recommends sheltering-in-place and evacuating to the 2nd floor or above, rather than forcing yourself to evacuate outside if you live on the 2nd floor or above.
- Underground spaces, underpasses, and places lower than the surroundings are prone to inundation damages.



Be prepared (to reduce inundation damages)

① Reduce building inundations

When the inundation is low, you can use what you have at your home to prevent inundation to buildings, underground parking, etc.

Makeshift water bag using a plastic bag

Double the plastic bag. Pour water inside, tighten the bag, put it in a cardboard box, etc. to prevent inundation.



Poly tank & picnic sheet

Fill the poly tank with water and wrap a picnic sheet around it.



Planter & picnic sheet

Wrap around a planter with soil in it with a picnic sheet and use it as a makeshift sandbag.



Water stop

Block the entrance with a long board to prevent inundation.



② Reduce household article damages

- Move valuables and important documents to higher locations safe from inundation.
- Move relocatable home appliances to higher places.
- Move your car early to a location safe from inundation.
- If you can bring your memorabilia out, such as photo albums, move them too.



③ Prepare for the suspension of lifelines : Water, electricity, gas, toilet, etc.

Lifelines may suspend for a long time. Stock up for water and food that last a few days until the lifelines restore.

- Move some of your stockpiles to a location safe from inundation.
- Take out some clothes for a few days' change.



When you evacuate...

① Evacuation information (to encourage evacuation)

< Issued by Taito City with designated areas >

When there is a danger of a disaster outbreak at times of wind and flood damage, the city issues an evacuation information with an **alert level**. The evacuation information is issued by the city and is based on the disaster prevention weather information issued by Japan Meteorological Agency, etc.

Alert Level	Evacuation Information	Actions to take
Level 3	Evacuation of the Elderly, Etc.	Elderly etc. should evacuate from hazardous places!
Level 4	Evacuation Instruction	Everyone should evacuate from hazardous places!
Level 5	Emergency Safety Measures	The disaster is already here. Take the best action possible to save your life!

When Arakawa River is assumed to flood, the city will issue information for a voluntary evacuation to a wider area, even prior to Alert Level 3. **Evacuate outside the inundation assumed area.**

② Disaster prevention weather information (on weather/river conditions)

< Issued by Japan Meteorological Agency, etc. >

JMA issues the disaster prevention weather information along with the **information equivalent to alert levels**. The disaster prevention weather information will serve as a guideline for the residents and facility managers etc. to take voluntary evacuation actions, however, it may include information that is not directly associated with Taito City. When you evacuate, refer to the City's evacuation information and take appropriate evacuation actions.

Alert Level	Weather emergency warning, warning, advisory, etc.	Designated river flood forecast	Actions to take
Level 1	Probability of Warnings (Possibilities of warning level)	—	Raise awareness to disasters by checking on the latest disaster prevention and weather information, etc.
Level 2	Heavy rain advisory Flood advisory Storm surge advisory	Flood warning information	Use the hazard map etc. to check the areas where disasters are assumed, where to evacuate, and your evacuation route.
Level 3 (equivalent)	Heavy rain warning (landslide disaster) Flood warning Storm surge advisory	Flood caution information	Pay attention to the Evacuation of the Elderly, etc. issued by the City. If you need time to evacuate, decide yourself to do so.
Level 4 (equivalent)	Landslide alert information Storm surge emergency warning Storm surge warning	Flood hazard information	Pay attention to the Evacuation Instruction issued by the City. Even when the Evacuation Instruction is not issued yet, start evacuating if you figure out that you are in danger.
Level 5 (equivalent)	Heavy rain emergency warning (landslide disaster)	Flood outbreak information	It is highly likely that the disaster is already here. Please take the best action possible to save your life.

Collect information

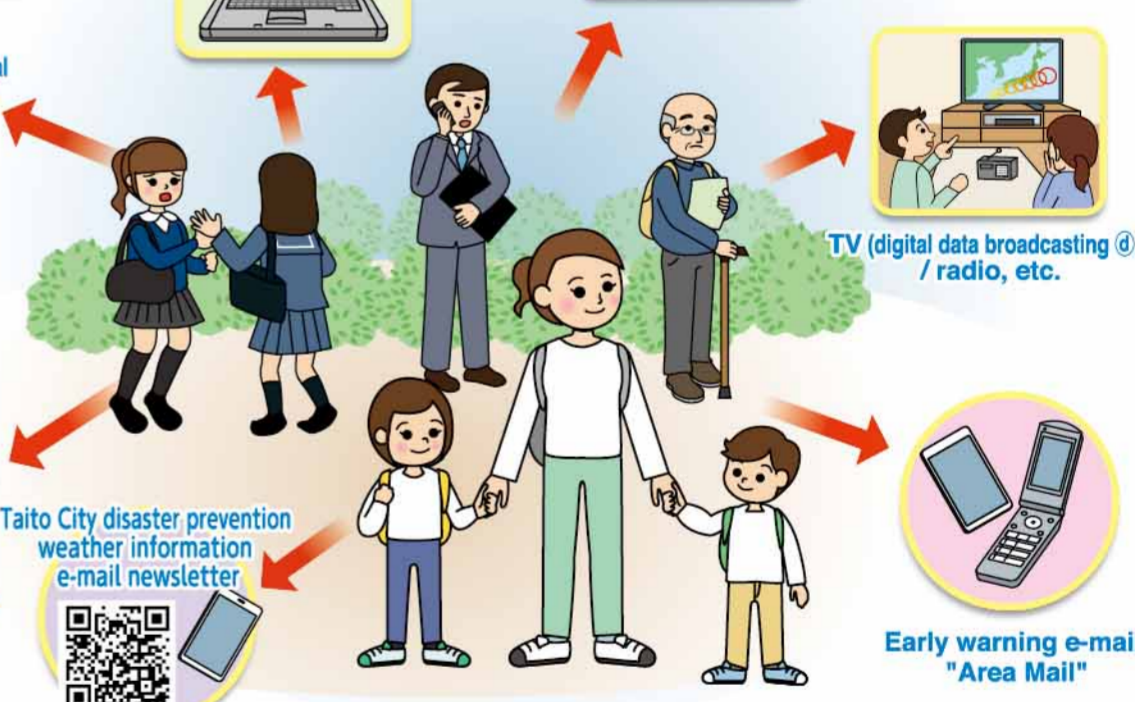
Various information is available at times of disaster. Always try to obtain the latest.

Taito City official website
<https://www.city.taito.lg.jp/>

Outdoor speakers for emergency administration radio system phone answering service 03-5246-4057

Taito City official Twitter account
Taito City official LINE account

Taito City disaster prevention app
Taito City disaster prevention e-mail newsletter



Evacuation action checklist

Use this checklist to acknowledge in advance the expected inundation height of your home, workplace, etc., where to evacuate, etc.

① How high is the inundation expected at your home or workplace, etc.?
 0.1 m ~ below 0.5m 0.5 m ~ below 1.0 m 1.0 m ~ below 3.0 m 3.0 m ~ below 5.0 m

② Decide where to evacuate (home or Evacuation Site)
 (e.g. home) [] (e.g. --elementary school) []

③ Write down on the map the evacuation route from home or workplace, etc.

④ Write down the contacts of your family or neighbors, etc., who will evacuate with you or need assistance.

Name	Phone	Address / Workplace / School etc.

Websites to obtain information on rainfalls and river water levels

JMA Contents: Offers weather forecasts. Website address: https://www.jma.go.jp/	Arakawa-Karyu River Office Contents: Offers water levels and rainfalls in Arakawa river, as well as live camera footage. Website address: https://www.ktr.mlit.go.jp/arage/
River disaster prevention information (MLIT) Contents: Offers real-time rainfalls and river water levels nationwide. Website address: https://www.river.go.jp/	Tokyo Amesh Contents: Offers real-time rainfall in Tokyo. Website address: https://tokyo-ame.jwa.or.jp/
Tokyo Metropolitan Flood Control Integrated Information System Contents: Offers flood control information issued by the Tokyo Metropolitan Government. Website address: http://www.kasen-suibou.metro.tokyo.jp/	Taito City Office Contents: Offers information on flood control and weather information in Taito City. Website address: https://www.city.taito.lg.jp/

Besides "Inland Inundation Hazard Map", Taito City also creates and publicizes other hazard maps on inundation by Arakawa and Kanda River waters, storm surge, inland inundation due to heavy rain, and landslide disaster. These maps can be found on Taito City's official website as well.

Inquiries on "Taito City Inland Inundation Hazard Map"
 Taito City Crisis & Disaster Management Section ☎ 03-5246-1092
 Published March 2022 / 令和 3 年度登録第 9 号