



TAITO CITY LIFE NEWS

Published by: Human Rights and Diversity Promotion Section, General Affairs Division, Taito City Office

2022.06 Vol. 27

4-5-6 Higashi-Ueno, Taito-ku 110-8615, Tel: 03-5246-1116

https://www.city.taito.lg.jp/kurashi/foreigner/jigyoannai/life_news.html

Please note that the content of the articles in this issue may change depending on the status of COVID-19 infections. We appreciate your understanding.

The City Office offers multilingual interpretation services via tablet devices.

Please inquire at the service window about the procedures.

The hours this service are available differ depending on the language.

<https://www.city.taito.lg.jp/kurashi/foreigner/sodan/sodan.html>

Supported languages: English, Chinese, Korean, Spanish, Portuguese, Vietnamese, Nepalese, Filipino (Tagalog), Thai, French, Russian, Hindi and Indonesian.



You can check the hours service is available here



Your Resident Tax Amount Has Been Decided

What Is Resident Tax?

Resident tax is like a membership fee that you pay to live in the community.

Even if you are a foreign resident, if you live in Japan as of January 1 and earned a certain amount of income during the previous year, you are required to report your income and pay the resident tax.

About Resident Tax Amount Notifications

The city calculates the amount of tax you owe based on your reported income or a notification from your employer regarding the salary you were paid. The city then notifies you by either method (1) or (2) below:

- (1) Mailed to your home (normal levy: the yearly amount is generally divided into four installments)
 1. Please confirm the tax amount and payment deadlines on the tax notification and payment statements we send you.
 2. Please make payments at the bank, post office, convenience store or other location by the deadline.
- (2) Mailed to your place of employment (special levy: the yearly amount is generally divided into twelve installments)
 1. You will receive the tax amount notification from your place of employment.
 2. Your place of employment will deduct the amount of tax you owe from your monthly salary and make the tax payments on your behalf.



For matters related to tax calculation and collection methods (individual payment, deduction from payroll):

Taxation Subsection, Tax Administration Section, Tel: 03-5246-1103 to 1105

For matters related to electronic payment (credit card, etc.) and bank transfer procedures:

Tax Administration Subsection, Tax Administration Section, Tel: 03-5246-1114

About Resident Tax Certificates

For official procedures such as changes of visa status, a tax payment certificate or taxation certificate to verify income is necessary.

The municipality administering your address as of January 1 each year will issue these certificates.

Example Where to get certificates for 2022 issued

⇒ Office of the municipality administering your address on January 1, 2022

Where to get certificates for 2021 issued

⇒ Office of the municipality administering your address on January 1, 2021

Notes: 1. You can obtain these certificates if you have declared your income or if your employer reported it to the tax authorities.

2. There is a handling fee for this service.

For matters related to certificates: Tax Administration Subsection, Tax Administration Section, Tel: 03-5246-1101

If You Have Trouble Paying Your Taxes

Please contact us immediately for advice if you have trouble making payments within the deadline.

For matters related to payment consultation: Collection Section, Tel: 03-5246-1107

Receive Health Checkups

Taito City conducts various health checkup programs meant to detect diseases early so that you can begin treatment. Since the health checkups you are eligible for differ depending on your health insurance and age, please refer to the tables below and confirm which checkups you can receive.



1. Receive Health Checkups

| Checkup name | Eligibility | Where to make reservations |
|---|--|---|
| Comprehensive health checkup | Residents 40 years old and older who are enrolled in Taito City National Health Insurance, the Latter-Stage Elderly Health Care System, or are receiving public financial assistance (checkup tickets will be sent to those who are eligible). | Designated medical institutions in the city |
| Public health exams | Residents of the city who are 15 years of age and older but under 40 that do not have the opportunity to receive a health checkup | Health Service Section Call or apply online on the website |
| Basic dental health checkup | City residents who are 30, 35, 40 to 55, 60, 65, 70, 75, 80 and 85 years of age (checkup tickets will be sent to those who are eligible). | Designated medical institutions in the city |
| Checkup for employees of small businesses | Employees of businesses in the city with 10 or fewer employees | Health Service Section Call or apply online from the website |

2. Receive cancer checkups (early detection and treatment is the key)

| Checkup name | Eligibility | Where to make reservations |
|------------------------------|--|--|
| Stomach cancer screenings | City residents 50 years of age and older who will reach an even age during the fiscal year (once every two years) | Designated medical institutions in the city |
| Lung cancer screenings | City residents 40 years of age and older | Designated medical institutions in the city |
| Colorectal cancer screenings | City residents 40 years of age and older (You can receive this checkup along with the comprehensive health checkup or the supplemental checkup.) | Cooperating medical institutions in the city |
| Cervical cancer screenings | Female city residents 20 years of age and older who will reach an even age during the fiscal year (once every two years) | Cooperating medical institutions in the city |
| Breast cancer screenings | Female city residents 40 years of age and older who will reach an even age during the fiscal year (once every two years) | Designated medical institutions in the city |

Note: Checkup tickets and information will be sent to all eligible residents, so please check the documents you receive. Please note that the checkup period differs depending on the type of checkup.

Age of Majority Changes to Eighteen

On April 1, the Civil Code of Japan was amended to lower the age of majority from 20 to 18.

Please read the following to find out what has changed, what remains the same, and other points to note.

| What You Can Do Once You Turn Eighteen | Must Be Twenty Years of Age (no change) |
|---|--|
| <ul style="list-style-type: none">◆ Sign a contract without parent/guardian consent, such as:<ul style="list-style-type: none">• Cellphone contracts• Loans• Obtain a credit card• Rent a room, and more◆ Acquire a ten-year passport◆ Obtain national certifications such as CPA, judicial scrivener, medical licenses, pharmacy license, etc.◆ Marriage The marriageable age for women was raised from 16 to 18, making 18 the legal age for marriage for both men and women.◆ A person whose sex assigned at birth does not match their gender identity can obtain a gender reassignment hearing. <p>Note: As before, ordinary vehicle licenses can be obtained at eighteen.</p> | <ul style="list-style-type: none">◆ Drink alcohol◆ Smoke cigarettes◆ Buy tickets for horse racing, keirin races, auto races, boat races and other sports betting◆ Adopt a child |

(Cited from government information available online.)

Points to note

You can now sign contracts at will starting at eighteen years of age. However, please keep in mind that you will no longer be subject to the “right to rescind for minors,” which allows minors to rescind a contract they have entered into without the consent of their parents/guardians.

- If you encounter problems, please contact the Taito City Consumer Life Center, Tel: 03-5246-1133



← Useful Presentation for Daily Life “Adult at Eighteen: The Change in the Age of Majority” (produced by Taito City)

Coming-of-Age Ceremony/Gathering of 20

The coming-of-age ceremony will change its name to the Gathering of 20, and will continue to be held for residents who turn twenty years old.

For more information regarding the change in age of majority, please visit the city website.



← Taito City Website: Adult at Eighteen! The Age of Majority Changes

Inquiries: Youth Subsection, Childrearing and Youth Support Section, **Tel:** 03-5246-1341

Service Counters Open on Second Sundays for Partial Services

Hours: 9 a.m. to 5 p.m.

Location: Taito City Office 1F

Services available:

- Matters related to family registry notifications
- Issuance of residence records, personal seal registration certificates, and family registry certificates
- Matters related to notifications of moving in/out and National Health Insurance enrollment
- Matters related to personal seal registration and annulment
- Payments for taxes or health insurance premiums and matters related to motorcycle registration
- Matters related to various childrearing allowances and medical subsidies for children
- Matters related to applications for and issuance of Individual Number cards
- Matters related to applications for and issuance of special permanent resident certificates
- Consultation on tax payments and health insurance premiums
- Matters related to issuance of residence tax (tax exemption) certificates
- Matters related to issuance of a *Mother and Child Health Handbook*
- Sales of one-month ticket, coupon tickets and one-day ticket for the Taito City Circular Route Bus, Megurin

Find a Hospital

You can search for hospitals through Himawari, a service run by the Tokyo Metropolitan Government. They will tell you the location, telephone number, hours and medical departments of the hospital.

◇ **Telephone**

Languages: English, Chinese, Korean, Thai and Spanish

Hours: 9 a.m. to 8 p.m.

Tel: 03-5285-8181

◇ **Internet** (English, Chinese and Korean)

URL: <https://www.himawari.metro.tokyo.jp/>



You can also access the website by scanning this code.

Taito City Night & Holiday Children's Clinic

Medical treatment is available for children fifteen years of age or younger for sudden illnesses that can be handled without hospitalization.

Location: Inside Eiju General Hospital, 2-23-16 Higashi-Ueno, Taito-ku

Tel: 03-3833-8381

Note: Please come to the emergency reception desk on the first floor.

Hours:

- Monday through Saturday (except on national holidays and during the yearend/New Year's holidays): 6:45 to 9:45 p.m. (treatment from 7 to 10 p.m.)
- Sundays, national holidays, *Obon* holidays (August 14-16), and during the yearend/New Year's holidays (December 29 to January 3): 8:45 a.m. to 9:45 p.m. (treatment from 9 a.m. to 10 p.m.)

Note: As a measure against COVID-19, we may designate when you can visit the hospital or redirect you to a specialized medical facility, so please call in advance.



You can also access the website by scanning this code.

Inquiry hours: 8:30 a.m. to 5 p.m. except for Saturdays, Sundays, national holidays and during the year-end/New Year's holiday period (unless otherwise stated)

Some Service Counters Have Extended Hours on Wednesdays

Extended hours: Until 7 p.m.

Available service counters:

Taito City Office (4-5-6 Higashi-Ueno, Taito-ku)

1F: ○ Family Registration Residents' Service Section

2F: ○ Nursing Care Insurance Section

○ Preventive Care & Community Support Section

○ Senior Citizens' Welfare Section

○ Handicapped Welfare Section

○ National Health Insurance Section

3F: ○ National Pension Subsection, Residents' Affairs Section

○ Collection Section ○ Tax Administration Section

6F: ○ Child-Rearing & Youth Support Section

○ After-School Affairs Subsection ○ Child Care Section

Residents' Offices

○ Seibu (West) Residents' Office (3-1-30 Shitaya, Taito-ku)

○ Nambu (South) Residents' Office (1-10-12 Kotobuki, Taito-ku)

○ Hokubu (North) Residents' Office (4-48-1 Asakusa, Taito-ku)

Taito City's Website Is Viewable in Various Languages

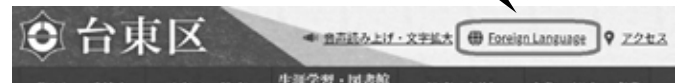
The Taito City website can be viewed in 108 languages.

Languages: English, Chinese (simplified and traditional), Korean, French, Indonesian, Malay, Thai, etc.

▶ **Procedure**

1. Click the "Foreign Language" button on the upper right side of the website

"Foreign Language" button



2. Choose a language

Inquiries: Public Relations Section, **Tel:** 03-5246-1021

Consultation about Life in Japan

▶ **Foreign Residents' Consultation Center**

If you have any problems or concerns, please feel free to consult the Foreign Residents' Consultation Center.

You can talk to a consultant directly on the following days.

| Language | Days | Hours |
|----------|-----------------------------------|-----------------|
| Chinese | First, second and third Thursdays | 10 a.m. to noon |
| English | First and third Thursdays | 10 a.m. to noon |
| Korean | First and third Thursdays | 2 to 4 p.m. |

Location: Residents' Consultation Office (Taito City Office 1F)

Inquiries: Residents' Consultation Office, Residents' Counseling Section

Tel: 03-5246-1025

Measures to Take to Prevent COVID-19 from Infecting You and Others

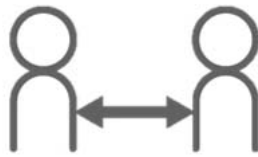
To avoid COVID-19 yourself and not infect others, wear a mask when talking to others and when going outdoors. When holding a conversation, maintain social distancing and keep a proper distance between you and the other person(s).

Be extra careful in daily life

Wear a mask



Maintain social distancing



Open windows and doors



Wash hands and fingers thoroughly



Eat without conversing



Avoid crowds



Please Have a Look at the Taito City Newsletter



Various notifications from the Taito City Office are written in the Taito City newsletter.

The newsletter can be viewed in various languages, such as English, Chinese (simplified and traditional),

Korean, Thai, and Indonesian if viewed from the city website or smartphone application "Catalog Pocket."

Note: To read via Catalog Pocket, search for "Taito City" after scanning the two-dimensional code and downloading the app.

Inquiries: Public Relations Section

Tel: 03-5246-1021



Android



iOS

About the Taito City Consumer Life Center

Ask for advice in these situations!

- I encountered a problem or felt something was off when signing a contract or shopping.
- If you are billed for something you didn't purchase
- If an accident occurs when using a product

● Who can use this service?

Anyone who lives, works or goes to school in Taito City

● Consultation days and hours

Monday through Friday
9 a.m. to 4 p.m.

● Consultation procedures

Call or come to the Taito City Consumer Life Center

Tel: 03-5246-1133

Location: Taito City Office 9F, Service Counter No. 7

- Consultation is free of charge. All matters are kept strictly confidential.

Inquiries: Residents' Counseling Section

Tel: 03-5246-1144

School Enrollment Consultation

School enrollment consultations are available for children with disabilities (or who may have disabilities) who are entering elementary or junior high school. During the consultations, the Board of Education will work with parents/guardians to determine the best school for the child to attend so they can lead a fruitful school life. To apply for this service, please contact the Special Needs Classroom Subsection of the School Affairs Section by phone.

Eligibility

Children who live in Taito City who will be entering the first grade of elementary school or the first year of junior high school in the next school year.

Inquiries

Special Needs Classroom Subsection, School Affairs Section
Tel: 03-5246-1416

View the Taito City Official YouTube Channel

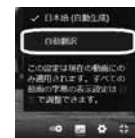
The public relations programs (news) and other videos the city produces are streaming on YouTube. You can display subtitles using YouTube's automatic translation function:



(1) Click on the caption  button on the bottom right of the video.



(2) Click on the  button, click on "Subtitles/CC," and then select "automatic translation" and choose a language.



Notes:

1. Only English-language translations are available when playing videos on smartphones and the like.
2. Since the channel uses YouTube's automatic translation function, the translation may not be accurate.
3. Depending on the video, the automatic translation function may not be available.

Inquiries: Public Relations Section, Tel: 03-5246-1041

Do You Know About the Nursing Care Insurance System?

Nursing care insurance is a system where the entire community supports each other to reduce the financial burden of people who require nursing care as well as their families. Those aged 40 and older enroll and pay the insurance premiums, and if nursing care is required, a portion of the costs are covered and services are provided.

○ Enrollees

Those aged 65 and older, as well as those from the ages of 40 to 64 that are enrolled in medical health insurance. As a general rule, foreigners who are registered residents of Taito City are required to enroll.

○ Health insurance premiums

Health insurance premiums for those aged 65 and older are determined by such things as their income situation, and are revised every three years.

For those from the ages of 40 to 64, nursing care insurance charges will be added to the insurance

premiums of the medical health insurance that they are enrolled in. Health insurance premiums vary according to enrolled medical health insurance.

○ Using nursing care services

Those aged 65 and older for whom it has been determined that nursing care and support is required, regardless of the cause, can use this service. For those from the ages of 40 to 64, services may be utilized if it has been determined that nursing care and support is required for specific illnesses such as cancer or cerebrovascular disease.

After you make application and become certified for nursing care and support, you can use services on the basis of a care plan created through consultation with a care manager, and a portion of costs are covered (10% to 30%).

Inquiries: Nursing Care Insurance Section
Tel: 03-5246-1257