



# TAITO CITY LIFE NEWS

2016.5 Vol. 3

Published by:

Residents' Support Section, Residents' Support Division, Taito City Office, 4-5-6 Higashi-Ueno, Taito-ku 110-8615, Tel: 03-5246-1126

[http://www.city.taito.lg.jp/index/kurashi/foreigner/life\\_news.html](http://www.city.taito.lg.jp/index/kurashi/foreigner/life_news.html)

## Free Wi-Fi Service Available

Free Wi-Fi is available at forty-two access points in Taito City.

**Date:** From March 1, 2016

**SSID:** Taito\_Free\_Wi-Fi

- ◇ Please register at an access point. An e-mail address is required.
- ◇ You can also use "Japan Connected-Free Wi-Fi," an app for smartphones
- ◇ The service can be used for 240 minutes per day (60 minutes per use x 4)
- ◇ City countermeasures and evacuation information can be viewed if a disaster occurs



**For more information on access points and how to use the service, please visit the following website:**

<http://www.city.taito.lg.jp/index/kusei/johokasuishin/wifi.html>

It can be viewed in Japanese, English, Chinese (simplified and traditional), Korean, French, Thai, Malay and Indonesian.

**Note:** Since the translation is automated, the text may not be entirely accurate in some cases.



### ▶ Sample Access Points

Shitamachi Museum	Negishi Social Education Hall
Shitamachi Museum Annex (Former Yoshida-ya Liquor Shop)	Kojima Social Education Hall
Ichiyo Memorial Museum	Taito City Office Main Bldg.
Asakura Museum of Sculpture	Taito Riverside Sports Center
Calligraphy Museum	Taito Civic Hall
Ueno Chuo-dori Street underground parking lot	Environment Fureai Hall Himawari
Kaminarimon underground parking lot	Yanaka Disaster Prevention Community Center
Sumida Park (three locations)	Tourist information board (five locations)
City Loop Bus "Megurin" (inside all buses)	

**Inquiries:** Information System Section, **Tel:** 03-5246-1031

# Are You Receiving the Child Allowance?

## ▶ Please File a Current Status Notification

The current status notification is a report to the City Office showing the current status of those who receive the child allowance. You must submit this form to receive the allowance from June onward.

The form will be mailed by the end of May to residents who already receive the allowance. Please complete the form and mail it back to the City Office by Thursday, June 30. Unless you file the notification, you will not receive the allowance from June onward. The amount of the allowance is determined according to your income.

## ▶ Did You Move to Taito City on or after January 2, 2016?

Please obtain a FY2016 tax certificate from the municipal office administering your address of January 1, 2016 and mail it and your completed current status notification to the Taito City Office.

Tax Certificate: This document certifies how much your resident tax was for one year.

**Inquiries:** Child-Rearing & Youth Support Section, **Tel:** 03-5246-1232



## We Support Your Child's Growth

If you have concerns or questions about your child's growth or about childrearing, please use the consultation services at Matsugaya Welfare Hall. Specialized staff members are ready to offer you advice.

For example, if your child:

- Is slow in starting to walk
- Is not increasing his/her vocabulary
- Is restless or agitated
- Often has temper tantrums
- Does not like group activities

Please call for advice. The service is free of charge, and all information will be kept strictly confidential.

**Inquiries:** Children's Medical Room, Matsugaya Welfare Hall, **Tel:** 03-3842-2673

## Hospitality for Muslims

### ▶ Hospitality Map for Muslims in Taito City

Pamphlets are available with the following information:

- Places in Taito City where you can attend religious services
- Halal-certified restaurants
- Hotels that are used to accommodating Muslims



### ▶ You can obtain the map at these two locations:

- Taito City Office 9F, Tourism Section
- Asakusa Culture Tourist Information Center

**Inquiries:** Tourism Section,  
**Tel:** 03-5246-1447

### ▶ Internet

[https://www.city.taito.lg.jp/index/bunka\\_kanko/yukyaku/tourist/1.html](https://www.city.taito.lg.jp/index/bunka_kanko/yukyaku/tourist/1.html)



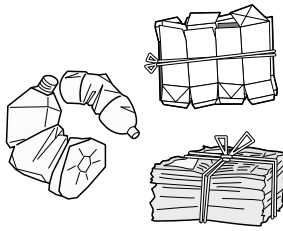
# Follow the Garbage Disposal Rules!

## ► How to Dispose of Your Garbage

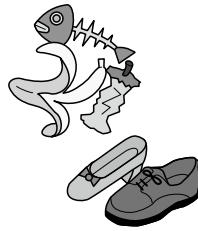
1. Separate your garbage into recyclable items, burnable garbage, unburnable garbage and large-size garbage
2. Take your garbage out on the proper collection day, depending on the type of garbage
3. Take your garbage to the designated location according to where you live ⇒ door-to-door collection per building

**Note:** Contact the Waste Collection Office to receive a garbage collection calendar.

### Examples of Garbage Categories



Recyclable items



Burnable garbage



Unburnable garbage



Picked up on a reservation basis

## ► Fees

As a rule, recyclable items, burnable garbage and unburnable garbage from households are collected free of charge. However, if you dispose of four or more 45-liter bags of garbage at one time, you will be charged a fee for the fourth bag and any additional bags.

## ► Large-sized Garbage (from households only)

Oversized garbage is collected on a reservation basis, and fees are charged for pickup. You can make a reservation for this with the Large-size Waste Reception Center. Please make your reservation by telephone or via the Internet.

● Large-size Waste Reception Center

**Tel:** 03-5296-7000 (Monday through Saturday, 8 a.m. to 7 p.m.)

**URL:** <http://sodai.tokyokankyo.or.jp/>



Purchase Large-sized Garbage Disposal Tickets and attach them to your items before disposal.

## ► Companies and Shops (business-related garbage)

Companies and shops are charged fees for the collection of garbage. If you have a company or shop, please contact a waste-handling company and/or a recyclable items collection company for your garbage. If the amount is small, you can purchase Taito City Business-Related Garbage Disposal Tickets, attach them to your bags, and dispose of them on the same day set for household garbage collection.

(Roughly up to three 45-liter garbage bags.)



Taito City Business-Related Garbage Disposal Tickets

## Let's Cut Down on Kitchen Scraps

Reducing the amount of garbage makes it is easier to dispose of. Dispose of kitchen scraps as burnable garbage. Here are some hints:

**1. Do not buy too many groceries at once**  
Buy only what you will be able to eat

**2. Do not cut off too much**  
Reduce the amount of food scraps and other waste you throw away

**3. Do not wet the peels**  
Wash vegetables after peeling them

**4. Do not create a lot of leftovers**  
Do not make too much food

**5. Drain kitchen scraps**  
Draining kitchen scraps before disposal reduces the smell

**Inquiries:** Taito City Waste Collection Office, **Tel:** 03-3876-5771

Waste & Recycle Section, **Tel:** 03-5246-1018

**Note:** Only in Japanese for both offices.

## Taito City's Website Is Viewable in Various Languages

The Taito City website can be viewed in eighty-nine languages.

**Languages:** English, Chinese (simplified and traditional characters), Korean, French, Indonesian, Malay, Thai, etc.

### ► Procedure

1. Click the "Multilingual" button on the upper right side of the website

"Multilingual" button



2. Choose a language

**Note:** Since the translation is automated, the text may not be entirely accurate in some cases.

**Inquiries:** Public Relations Section, **Tel:** 03-5246-1021

## Search for a Hospital

You can search for a hospital by phone or via the Internet in several foreign languages. They will tell you the location, telephone number, hours and medical departments of the hospital.

### ◇ Telephone

**Languages:** English, Chinese, Korean, Thai and Spanish

**Hours:** 9 a.m. to 8 p.m.

**Tel:** 03-5285-8181

### ◇ Internet (Japanese and English)

**URL:** <http://www.himawari.metro.tokyo.jp/qq/qq13enmnl.asp>



## Consultation Offered in Foreign Languages

### ► Consultations for Foreign Residents

If you have any problems or concerns, please feel free to consult the Foreign Residents' Advisory Center.

Language	Days	Hours
Chinese	First, second and third Thursdays	10 to 11:30 a.m.
English	First and third Thursdays	10 to 11:30 a.m.
Korean	First and third Thursdays	2 to 3:30 p.m.

**Location:** Residents' Advisory Office (Taito City Office 1F)

### ► Tablet-Based Interpretation Service

While you are at the City Office for your consultation, please feel free to use our interpretation service, which is delivered via a tablet device.

**Languages:** English, Chinese, Korean, Spanish and Portuguese

**Hours:** 8:30 a.m. to 5:15 p.m. (Wednesdays, 8:30 a.m. to 7 p.m.)

Third Sunday of the month, 9 a.m. to 5 p.m.

**Location:** Residents' Advisory Office (Taito City Office 1F)

**Inquiries:** Residents' Advisory Office, Residents' Counseling Section,

**Tel:** 03-5246-1025

