



TAITO CITY LIFE NEWS

2017.03 Vol. 6

Published by:

Residents' Support Section, Residents' Support Division, Taito City Office, 4-5-6 Higashi-Ueno, Taito-ku 110-8615, Tel: 03-5246-1126

http://www.city.taito.lg.jp/index/kurashi/foreigner/life_news.html

Take a Visit to a World Heritage Site The National Museum of Western Art

In July 2016, the National Museum of Western Art—located in Ueno Park—was registered as a UNESCO World Heritage Site. The museum building is the only work of Le Corbusier, "a master of modern architecture," in Japan. Seventeen of Le Corbusier's works—including the National Museum of Western Art—located in seven countries around the world (France, Japan, Germany, Switzerland, Belgium, Argentina and India) were registered as World Heritage Sites together. This museum is definitely worth a visit.

Hours:

Permanent exhibit: 9:30 a.m. to 5:30 p.m.

Until 8 p.m. on Fridays and Saturdays

Special exhibit: 9:30 a.m. to 5:30 p.m.

Until 8 p.m. on Fridays; the closing time on Saturdays varies depending on the exhibit.

(Admission until thirty minutes before closing time.)

Closed: Mondays (if Monday is a national holiday, then the following day), during the yearend/New Year's holidays, and other designated days.

Note: Since there are also other holidays, please check the National Museum of Western Art website for more information.

Permanent exhibit admission: Adults: ¥430; university students: ¥130 (as of February 2017)

Note: Free of charge for high school students or younger/those under eighteen years of age, those sixty-five years of age or older, those with physical or mental disabilities and one escort (please show your student ID, documentation to confirm your age, or your *Certificate for the Disabled* upon admission).

Address: 7-7 Ueno-Koen, Taito-ku; Tel: 03-5777-8600 (Hello Dial)

URL: <https://www.nmwa.go.jp/>

Access:

- 1-min walk from JR Ueno Station (Park Exit)
- 7-min walk from Keisei Ueno Station on the Keisei Line
- 8-min walk from Ueno Station on the Tokyo Metro Ginza Line or Hibiya Line
- 1-min walk from the No. 2/No.22 "Ueno Eki-Ueno Koen" bus stop, on the City loop bus "Tozai Megurin."

Note: No parking is available. Please come by public transportation.



© The National Museum of Western Art



You can also access the website by scanning this code.

Please check the latest information on the National Museum of Western Art website or through "Hello Dial."

Asakura Museum of Sculpture

Hours: 9:30 a.m. to 4:30 p.m. (Admission until 4 p.m.)

Closed: Mondays and Thursdays (the following day if it is a national holiday), during the yearend/New Year's holidays, and on special maintenance days

Admission: Adult: ¥500 (¥300); elementary, junior high, and high school student: ¥250 (¥150)

Notes: 1. The rates within parentheses () are for groups of twenty persons or more.

2. Free of charge for those with a *Handbook for the Disabled*, those with a medical certificate for specified diseases and their caregiver.

3. Free of charge on Saturdays for elementary and junior high school students who live or go to school in Taito City and their chaperone.

Address: 7-18-10 Yanaka, Taito-ku 110-0001

Tel: 03-3821-4549

URL: <http://www.taitocity.net/zaidan/asakura/>

Access:

• 5-minute walk from the west exit of Nippori Station (exit through the north gates) on the JR and Keisei lines, or the Nippori-Toneri Liner

• 8-minute walk from the "Yanaka Reien Iriguchi" bus stop (No. 9 or 16), on the City loop bus "Tozai Megurin."

Note: Please take off your shoes inside the museum. In addition, wearing socks is required.



Dangling Cat



You can also access the website by scanning this code.

Using City Libraries

You can borrow books, magazines, newspapers, CDs and DVDs. There are also books and newspapers in foreign languages at some of the libraries. Please take advantage of these services.



	Address	Tel.
Central Library	3-25-16 Nishi-Asakusa, Taito-ku	03-5246-5911
Asakusabashi Branch	2F and 3F, 2-8-7 Asakusabashi, Taito-ku	03-3863-0082
Yanaka Branch	3F, 5-6-5 Yanaka, Taito-ku	03-3824-4041
Negishi Library	2F, 5-18-13 Negishi, Taito-ku	03-3876-2101
Ishihama Library	1-35-16 Hashiba, Taito-ku	03-3876-0854

To Dog Owners

Taito City residents who own dogs are responsible for doing the following:

- (1) Registering their dog (once in the dog's lifetime)
- (2) Getting their dog a rabies vaccination (once a year)
- (3) Certifications for (1) and (2) must be attached to the dog

Note: Residents who do not do these things may face a fine.

You can register your dog and get your pet a rabies vaccination at veterinary hospitals in Taito City. You can also receive the dog tags described in (3).

▽ Proper manners for dog owners

- (1) Use a leash when walking your dog
- (2) Always take your dog's waste home with you

These are specified by a city ordinance, so be sure to observe them. In addition, please show consideration for your neighbors and follow proper manners as a dog owner, such as having your dog poop in a place that will not cause a problem for other people and then clean up after it, and disperse the dog's urine with water.

Inquiries: Animal Protection Management Subsection, Living & Public Health Section, Taito Health Center

Tel: 03-3847-9437



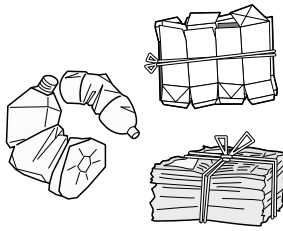
Follow the Garbage Disposal Rules!

► How to Dispose of Your Garbage

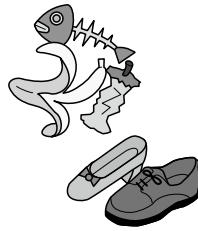
1. Separate your garbage into recyclable items, burnable garbage, unburnable garbage and large-size garbage
2. Take your garbage out on the proper collection day, depending on the type of garbage
3. Take your garbage to the designated location according to where you live ⇒ door-to-door collection per building

Note: Contact the Waste Collection Office to receive a garbage collection calendar.

Examples of Garbage Categories



Recyclable items

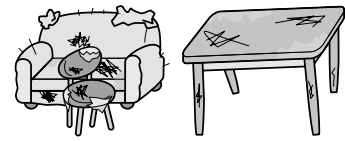


Burnable garbage



Unburnable garbage

Large-sized garbage
Items over 30 cm on any side



Picked up on a reservation basis

► Fees

As a rule, recyclable items, burnable garbage and unburnable garbage from households are collected free of charge. However, if you dispose of four or more 45-liter bags of garbage at one time, you will be charged a fee for the fourth bag and any additional bags.

► Large-sized Garbage (from households only)

Oversized garbage is collected on a reservation basis, and fees are charged for pickup. You can make a reservation for this with the Large-size Waste Reception Center. Please make your reservation by telephone or via the Internet.

● Large-size Waste Reception Center

Tel: 03-5296-7000 (Monday through Saturday, 8 a.m. to 7 p.m.)

URL: <http://sodai.tokyokankyo.or.jp/>



Purchase Large-sized Garbage Disposal Tickets and attach them to your items before disposal.

► Companies and Shops (business-related garbage)

Companies and shops are charged fees for the collection of garbage. If you have a company or shop, please contact a waste-handling company and/or a recyclable items collection company for your garbage (please visit the Taito City website for more information). If the amount is small, you can purchase Taito City Business-Related Garbage Disposal Tickets, attach them to your bags, and dispose of them on the same day set for household garbage collection.

(Roughly up to three 45-liter garbage bags.)



Taito City Business-Related Garbage Disposal Tickets

Let's Cut Down on Kitchen Scraps

Reducing the amount of garbage makes it is easier to dispose of. Dispose of kitchen scraps as burnable garbage. Here are some hints:

1. Do not buy too many groceries at once
Buy only what you will be able to eat

2. Do not cut off too much
Reduce the amount of food scraps and other waste you throw away

3. Do not wet the peels
Wash vegetables after peeling them

4. Do not create a lot of leftovers
Do not make too much food

5. Drain kitchen scraps
Draining kitchen scraps before disposal reduces the smell

Inquiries: Taito City Waste Collection Office, **Tel:** 03-3876-5771
Waste & Recycle Section, **Tel:** 03-5246-1018

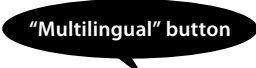
Taito City's Website Is Viewable in Various Languages

The Taito City website can be viewed in eighty-nine languages.

Languages: English, Chinese (simplified and traditional characters), Korean, French, Indonesian, Malay, Thai, etc.

► Procedure

1. Click the "Multilingual" button on the upper right side of the website



2. Choose a language

Note: Since the translation is automated, the text may not be entirely accurate in some cases.

Inquiries: Public Relations Section, **Tel:** 03-5246-1021

Search for a Hospital/Clinic

You can search for a hospital by phone or via the Internet in several foreign languages. They will tell you the location, telephone number, hours and medical departments of the hospital.

◇ Telephone

Languages: English, Chinese, Korean, Thai and Spanish

Hours: 9 a.m. to 8 p.m.

Tel: 03-5285-8181

◇ Internet (Japanese and English)

URL: <http://www.himawari.metro.tokyo.jp/qq/qq13enmnl.asp>



Consultation Offered in Foreign Languages

► Consultations for Foreign Residents

If you have any problems or concerns, please feel free to consult the Foreign Residents' Advisory Center.

Language	Days	Hours
Chinese	First, second and third Thursdays	10 to 11:30 a.m.
English	First and third Thursdays	10 to 11:30 a.m.
Korean	First and third Thursdays	2 to 3:30 p.m.

Location: Residents' Advisory Office (Taito City Office 1F)

► Tablet-Based Interpretation Service

While you are at the City Office for your consultation, please feel free to use our interpretation service, which is delivered via a tablet device.

Languages: English, Chinese, Korean, Spanish and Portuguese

Hours: 8:30 a.m. to 5:15 p.m. (Wednesdays, 8:30 a.m. to 7 p.m.)

Second Sunday of the month, 9 a.m. to 5 p.m.

Location: Residents' Advisory Office (Taito City Office 1F)

Inquiries: Residents' Advisory Office, Residents' Counseling Section,

Tel: 03-5246-1025



Making Buildings Earthquake-Resistant

Are you prepared for an earthquake? Taito City offers partial subsidies for the following work:

- Earthquake-resistance inspection
- Designs for reinforcement
- Earthquake-resistance reinforcement construction (for homes only)
- Demolition of buildings

The subsidies are applicable for buildings in Taito City built before May 31, 1981. Please call the number below for more information about the subsidy amount and requirements.

There are other subsidy programs related to earthquake resistance as well. For more details, please visit:

<http://www.city.taito.lg.jp/index/kurashi/kenchiku/taishin/taishin/index.html>

Inquiries: Construction Section

Tel: 03-5246-1335



You can also access the website by scanning this code.

Prepare an Emergency Backpack

Pack a backpack or other bag with necessities and have it ready to go in case of an emergency. Store it in a place such as near the entrance or in your bedroom so that you'll be able to take it with you quickly should you need to evacuate.



Example of items to store in your emergency backpack

- Drinking water
- Preserved foods (canned foods, crackers, biscuits)
- Can opener
- Valuables (bankbooks, cash, health insurance cards)
- First-aid kit (household medicine, bandages, etc.)
- Helmets, disaster hood
- Masks, gloves
- Flashlight
- Clothes
- Blankets, towels
- Portable radio
- Dry-cell batteries
- Wet wipes
- Disposable diapers, baby formula, etc.

Short-Term Childcare

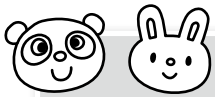
To mothers and fathers: Would you like to take a break? We provide childcare services by the hour.

Note: The service is available regardless of the reason, such as work.

Eligibility	Children between one and six years old (pre-schoolers) who live in Taito City, are healthy and are able to adjust to group activities
Days and hours	Year-round from 9 a.m. to 5 p.m. except for January 1 through 3
Maximum use	Up to eight times per month
Fee	¥500 per hour There is a separate fee for lunch (¥400) and snacks (¥100).
Location	Horai Childrearing Support Center Welfare Plaza Taito Seihokai 2F, 2-14-7 Kiyokawa, Taito-ku
Other	Registration in advance is required.



Inquiries: Horai Childrearing Support Center, **Tel:** 03-5824-5624



Childrearing Helpers "Attaka Hand"



Helpers can be dispatched to the homes of expectant mothers and those who need help with their infants to help with childrearing and household chores.

Program:

If you contact the Nihonzutsumi Families and Children Support Center, a staff member will visit your home and offer advice about the kind of assistance you need.

Program	Childrearing assistance (bathing, feeding, changing diapers, etc.) Household chores (preparing meals, grocery shopping, laundry and housecleaning)
Eligibility	Expectant mothers one month before their due date and mothers with a child less than six months old (with no one else to help), who reside in Taito City. Note: For pregnant women expecting multiple births, between two months before childbirth and less than ten months after childbirth.
Days and hours	Monday through Friday, 9 a.m. to 5 p.m. (except national holidays and during the yearend/New Year's holidays)
Maximum use	Up to twenty times (forty hours), with each visit up to two hours long. Note: For pregnant women expecting multiple births, up to forty times (eighty hours).
Fee	¥1,000 each time (two hours) Note: Fee-reduction plans are available.

Inquiries: Nihonzutsumi Families and Children Support Center, **Tel:** 03-5824-2571 (Closed on Sundays, national holidays and during the yearend/New Year holidays)

Short-Term Childrearing Support

Infants and Toddlers Short Stay, Short Stay, Twilight Stay

Temporary childcare can be provided for parents raising children who are having difficulty taking care of their children due to work or illness.



	Infants and Toddlers Short Stay	Short Stay	Twilight Stay
Eligibility	Infants and toddlers up to but not including two years of age who live in Taito City	Children between two years of age and sixth grade of elementary school who live in Taito City, are healthy, and are able to adjust to group activities	
Maximum use	Seven days per month (up to six nights and seven days)	Seven days per month (up to six nights and seven days) Note: Except for January 1 through 3	Up to thirty days within a six-month period Note: Except for January 1 through 3
Fee	One-night, two-day stay (with meals) ¥6,000 Note: Reduction and exemption plans are available.		5 to 10 p.m. (with meals) ¥2,000 each time Note: Reduction and exemption plans are available.
Location	Japan Red Cross Medical Center and Pediatric Hospital Address: 4-1-1 Hiroo, Shibuya-ku	Horai Childrearing Support Center Address: Welfare Plaza Taito Seihokai 2F, 2-14-7 Kiyokawa, Taito-ku	
Other	Application in advance is required.		Registration in advance is required.

Inquiries: Nihonzutsumi Families and Children Support Center, **Tel:** 03-5824-2571 (closed on Sundays, national holidays and during the yearend/New Year's holidays)