



# TAITO CITY LIFE NEWS

2017.09 Vol. 8

Published by:

Residents' Support Section, Residents' Support Division, Taito City Office, 4-5-6 Higashi-Ueno, Taito-ku 110-8615, Tel: 03-5246-1126

[http://www.city.taito.lg.jp/index/kurashi/foreigner/life\\_news.html](http://www.city.taito.lg.jp/index/kurashi/foreigner/life_news.html)

## We Provide Yurikago-Taito Consultation Services Taito City Supports All Expectant Mothers!

Taito City conducts Yurikago-Taito consultation services with all expectant mothers. During the consultation, a public health nurse will consult with you about your worries and concerns and give you advice about appropriate services from pregnancy through childrearing to support your pregnancy period.

After the consultation, we will give you a Children's Gift Coupon worth ¥10,000.



**Eligibility:** Mothers-to-be who are residents of Taito City by the consultation date.

**Note:** Persons who are currently pregnant only.

**Location:** (1) Taito Health Center 2F

(2) Asakusa Health Consultation Center 1F

**Days and hours:** Monday through Friday, 8:30 a.m. to 5:15 p.m. (Closed on national holidays and during the yearend/New Year's holidays.)

**Interview time:** About 20 to 30 minutes per person.

**Note:** Advanced reservation preferred.

**What to bring:** *Mother and Child Health Handbook*

**Inquiries:** Health Service Section, **Tel:** 03-3847-9497, **Fax:** 03-3847-9467

Asakusa Health Consultation Center, **Tel:** 03-3844-8171, **Fax:** 03-3844-8178

## About the Taito City Consumer Life Center

### Ask for advice in these situations!

- If you have problems or suspicions when signing a contract or making a purchase
- If you are sent a bill for something you don't know
- If an accident occurs when using a product

### ● Who can use this service?

Anyone who lives, works or goes to school in Taito City

### ● Consultation days and hours

Monday through Friday  
9 a.m. to 4 p.m.

### ● Consultation procedures

Call or come to the Taito City Consumer Life Center

**Tel:** 03-5246-1133

**Location:** Taito City Office 9F, Service Counter No. 7

### ● Consultation is free of charge. All matters are kept strictly confidential.

**Inquiries:** Residents' Counseling Section

**Tel:** 03-5246-1144

## Please Use the Map for Muslims in Taito City

This map introduces eating and drinking facilities and accommodations according to Muslim customs, such as restaurants that have halal certification and provide other services for Muslims, and places that can be used for prayer.

The map is in English.

You can download the map from the Taito City website.

**URL:** [http://www.city.taito.lg.jp/index/bunka\\_kanko/yukyaku/tourist/1.html](http://www.city.taito.lg.jp/index/bunka_kanko/yukyaku/tourist/1.html)



You can also access the website by scanning this code.

## Information for Foreign Residents

The Taito City website posts various information for foreign residents.



Tanabata experience at the Japanese-language class

Examples

- Japanese-language classes for foreign residents
- Friendly exchange programs
- News bulletin for foreign residents
- Information about administrative procedures
- Other useful information

**URL:** <http://www.city.taito.lg.jp/index/kurashi/foreigner/index.html>



You can also access the website by scanning this code.

**Inquiries:** Cooperation and Multicultural Living Subsection, Residents' Affairs Section, **Tel:** 03-5246-1126

## Come to the Ichiyo Memorial Museum

### Museum information

**Hours:** 9 a.m. to 4:30 p.m. (admission is open until 4 p.m.)

**Closed:** Mondays (the following day if Monday is a national holiday)

### Admission:

Individuals: ¥300 for adults; ¥100 for elementary and junior high school students

Groups: ¥200 for adults; ¥50 for elementary and junior high school students (groups must include at least twenty persons)

Annual passport: ¥600 (valid for one year after the date of issue)

### Notes:

1. Admission is free for those with a handbook for the disabled or those with a special illness medical certificate and their caretakers.
2. Admission on Saturdays is free for elementary and junior high school students who live or go to school in Taito City and their chaperones.

### Access

- **Via Tokyo Metro Hibiya Line:** A ten-minute walk from Minowa Station (Exit 1b)

- **Via Toei Bus (Bus No. 都08):** A three-minute walk from the Ryusen bus stop, getting on from Nippori Station on JR or the Keisei Line, or from Kinshicho Station on JR or the Tokyo Metro Hanzomon Line.
- **Via Megurin loop bus:** A two-minute walk from bus stop No. 15 Ichiyo-kinenkan-iriguchi on Kita-Megurin (north route), or a five-minute walk from bus stop No. 5 Ichiyo-kinenkan on Gururi-Megurin (north-south route)

The Taito City Ichiyo Memorial Museum opened on May 12, 1961 in Shitaya Ryusenji-machi—currently Ryusen of Taito City—where Ichiyo Higuchi once lived. The museum was the first of its kind in Japan to honor a female literary figure.

After over four decades, however, the building was becoming very old. When Ichiyo's face was placed on the ¥5,000 bill in 2004, it was a perfect opportunity to renovate the building. The museum reopened on November 1, 2006.

**Inquiries:** Ichiyo Memorial Museum, 3-18-4 Ryusen, Taito-ku 110-0012

**Tel:** 03-3873-0004, **Fax:** 03-3873-5942

# Follow the Garbage Disposal Rules!

## ▶ How to Dispose of Your Garbage

1. Separate your garbage into recyclable items, burnable garbage, unburnable garbage and large-sized garbage
2. Take your garbage out on the proper collection day, depending on the type of garbage and the region where you live
3. Bring your garbage to the designated location by the place you live → door-to-door collection per building

**Note:** Contact the Waste Collection Office to receive a garbage collection calendar.

			<p><b>Large-sized garbage</b> Home appliances, furniture, etc.</p> <p>You must apply with the Large-size Waste Reception Center</p>
<b>Recyclable items</b>	<b>Burnable garbage</b>	<b>Unburnable garbage</b>	

## ▶ Fees

As a rule, recyclable items, burnable garbage and unburnable garbage from households are collected free of charge. However, if you dispose of four or more 45-liter bags of garbage at one time, you will be charged a fee for the fourth bag and any additional bags.

## ▶ Large-sized Garbage (from households only)

Oversized garbage is collected on a reservation basis, and fees are charged for pickup. You can make a reservation for this with the Large-size Waste Reception Center. Please make your reservation by telephone or via the Internet. Internet reservations can be made in Japanese, English, Chinese and Korean.

### ● Large-size Waste Reception Center

**Tel:** 03-5296-7000 (Monday through Saturday, 8 a.m. to 7 p.m.)

**URL:** <http://sodai.tokyokankyo.or.jp/>

**Inquiries:** Taito City Waste Collection Office, **Tel:** 03-3876-5771



You can also access the website by scanning this code.



Purchase Large-sized Garbage Disposal Tickets and attach them to your items before disposal.

## Service Counters Open on Second Sundays for Partial Services

- Hours:** 9 a.m. to 5 p.m.
- Location:** Taito City Office 1F
- Available services:**
  - ⊙ Matters related to family registry notifications
  - ⊙ Matters related to residence records, personal seal registration certificates and family registry certificates
  - ⊙ Matters related to notification of moving in/out, personal seal registration, and National Health Insurance enrollment
  - ⊙ Payments for taxes or health insurance premiums and matters related to motorcycle registration
  - ⊙ Matters related to childrearing allowances and medical subsidies
  - ⊙ Consultation on tax payments and health insurance premiums

## Some Service Counters Have Extended Hours on Wednesdays

- Extended hours:** Until 7 p.m.
- Available service counters:**
  - Taito City Office (4-5-6 Higashi-Ueno, Taito-ku)
  - 1F: ⊙ Family Registration Residents' Service Section
  - 2F: ⊙ National Health Insurance Section ⊙ Disabled Persons' Welfare Section ⊙ Long-term Care Insurance Section ⊙ Senior Citizens' Welfare Section
  - 3F: ⊙ Tax Administration Section ⊙ Collection Section ⊙ National Pension Subsection, Residents' Support Section
  - 6F: ⊙ Child Care Section ⊙ Child-Rearing & Youth Support Section
- Residents' Offices**
  - ⊙ Seibu (West) Residents' Office (3-1-30 Shitaya, Taito-ku)
  - ⊙ Hokubu (North) Residents' Office (4-48-1 Asakusa, Taito-ku)
  - ⊙ Nambu (South) Residents' Office (1-10-12 Kotobuki, Taito-ku)

## Taito City's Website Is Viewable in Various Languages

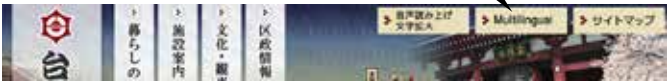
The Taito City website can be viewed in 103 languages.

**Languages:** English, Chinese (simplified and traditional), Korean, French, Indonesian, Malay, Thai, etc.

### ► Procedure

1. Click the "Multilingual" button on the upper right side of the website

"Multilingual" button



2. Choose a language

**Note:** Since the translation is automated, the text may not be entirely accurate in some cases.

**Inquiries:** Public Relations Section, **Tel:** 03-5246-1021

## Search for a Hospital/Clinic

You can search for a hospital by phone or via the Internet in several foreign languages. They will tell you the location, telephone number, hours and medical departments of the hospital.

### ◇ Telephone

**Languages:** English, Chinese, Korean, Thai and Spanish

**Hours:** 9 a.m. to 8 p.m.

**Tel:** 03-5285-8181

### ◇ Internet (Japanese and English)

**URL:** <http://www.himawari.metro.tokyo.jp/qq/qq13enmnl.asp>



You can also access the website by scanning this code.

## Consultation Offered in Foreign Languages

### ► Foreign Residents' Consultation Center

If you have any problems or concerns, please feel free to consult the Foreign Residents' Consultation Center.

Language	Days	Hours
Chinese	First, second and third Thursdays	10 to 11:30 a.m.
English	First and third Thursdays	10 to 11:30 a.m.
Korean	First and third Thursdays	2 to 3:30 p.m.

**Location:** Residents' Consultation Office (Taito City Office 1F)

### ► Tablet-Based Interpretation Service

While you are at the City Office for your consultation, please feel free to use our interpretation service, which is delivered via a tablet device.

**Languages:** English, Chinese, Korean, Spanish and Portuguese

**Hours:** 8:30 a.m. to 5:15 p.m. (Wednesdays, 8:30 a.m. to 7 p.m.)

Second Sunday of the month, 9 a.m. to 5 p.m.

**Location:** Residents' Consultation Office (Taito City Office 1F)

**Inquiries:** Residents' Consultation Office, Residents' Counseling Section

**Tel:** 03-5246-1025



# Wheelchairs Available for Taito City Residents to Rent

## Eligibility:

- Residents not eligible for Nursing Care Insurance
- Residents applying for Nursing Care Insurance
- Residents who temporarily need a wheelchair for going to a doctor's office/clinic or other place

## How to use the service:

Please come to the service counter at the support center mentioned below.

## What to bring:

- Some documentation confirming your residence in Taito City (such as a health insurance card, Nursing Care Insurance card, residence card or driver's license)
- Personal seal of the person renting the wheelchair

## Rental period:

As a rule, the rental period is three months, but this can be extended to six months depending on your circumstances. It is not possible to rent a wheelchair for longer than six months.

**Note:** Those with Nursing Care Insurance can also rent wheelchairs for a short period (generally about one week).



## Fee:

Free of charge

## Wheelchair stations:

As of April 1, 2017, there are sixty-seven wheelchair stations in Taito City, including the Council of Social Welfare. If you need a wheelchair for a short period of time—generally about one week—please use your local wheelchair station.

For more information, please contact the service counter below.



## Inquiries:

Taito Volunteer and Community Activity Support Center, Council of Social Welfare  
1-2-11 Shitaya, Taito-ku 110-0004

**Tel:** 03-5828-7546

Weekdays: 8:30 a.m. to 5:15 p.m.

Third Saturday of the month: 9 a.m. to 5 p.m.

(Closed on Saturdays, Sundays, national holidays, and during the yearend/New Year's holidays.)

**URL:** <http://www.taitoshakyo.com/>



You can also access the website by scanning this code.

## Let's Cut Down on Kitchen Scraps

**Reducing the amount of garbage makes it is easier to dispose of.  
Dispose of kitchen scraps as burnable garbage.**

**1. Do not buy too many groceries at once**  
Buy only what you will be able to eat

**2. Do not cut off too much**  
Reduce the amount of food scraps and other waste you throw away

**3. Do not wet the peels**  
Wash vegetables after peeling them

**4. Do not create a lot of leftovers**  
Do not make too much food

**5. Drain kitchen scraps**  
Draining kitchen scraps before disposal reduces the smell

**Inquiries:** Taito City Waste Collection Office, **Tel:** 03-3876-5771  
Waste & Recycle Section, **Tel:** 03-5246-1018

## Enrolling Your Child in a Municipal Kindergarten or Licensed *Kodomoen* (Short-Time Childcare)

Children are recruited for the new school year in mid-November every year.

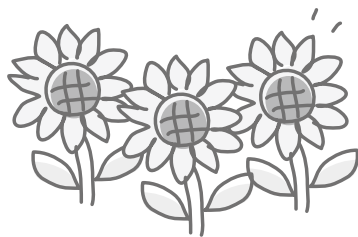
If there are vacancies, however, applications are accepted at any time.

For more information, please call the number below.

### Inquiries:

Kindergartens: Educational Affairs Subsection, School Affairs Section, **Tel:** 03-5246-1412

Licensed *kodomoen*: Kodomoen Subsection, School Affairs Section, **Tel:** 03-5246-1414



## Enrolling Your Child in a Municipal Elementary or Junior High School

If your child has foreign nationality, has become a resident of Taito City, and you want to enroll him/her in a municipal elementary or junior high school, please come to the School Affairs Section of the Taito City Office (6F, Service Counter No. 2). Please be sure to bring your residence card and your child's card as well.

### Note

1. If your child is a registered resident of Taito City and is already attending a municipal elementary school, you do not need to complete procedures for admission to a municipal junior high school.
2. If your child is attending an elementary school other than a Taito City municipal school and you want to enroll him/her in a municipal junior high school as a first-year student, please bring a certificate verifying the prospect of your child graduating from elementary school.

Please contact the number below if you have any questions.

**Inquiries:** Educational Affairs Subsection, School Affairs Section, **Tel:** 03-5246-1412



## Medical Certificates for Medical Subsidies for Children Program (Infant-Toddler Medical Certificate/Children's Medical Certificate) Being Renewed

Current medical certificates are valid through September 30, and the new medical certificates—which are light orange in color—will be mailed by that date. If you already have one of these medical certificates, you do not need to apply for a new one. If you do not receive your certificate by October, please call the number below.

**Note:** If you do not have a medical certificate, please come to the City Office to apply for one.

**Inquiries:** Benefits Subsection, Child-Rearing & Youth Support Section, **Tel:** 03-5246-1232



○ 医療証	
負担者番号	8 8 1 3 ○ ○ ○ ○
受給者番号	○ ○ ○ ○ ○ ○ ○ ○
乳幼児	氏名 台東 花子 男・女
	生年月日 平成 29 年 1 月 1 日生
保護者	住所 〒110-8615 台東区東上野4丁目5番6号
	氏名 台東 太郎
有効期間	平成 29 年 10 月 1 日から
	平成 30 年 9 月 30 日まで
上記の者は、東京都台東区乳幼児医療費の助成に関する条例により医療費の一部を台東区が助成するものであることを証明する。	
東京都台東区長	
服部 征夫	
交付年月日	平成 29 年 10 月 1 日