



TAITO CITY LIFE NEWS

2018.09 Vol. 12

Published by:

Residents' Affairs Section, Citizen's Division, Taito City Office, 4-5-6 Higashi-Ueno, Taito-ku 110-8615, Tel: 03-5246-1126

http://www.city.taito.lg.jp/index/kurashi/foreigner/life_news.html

The City Office offers multilingual interpretation services via tablet devices.
Please inquire at the service window about the procedures.
Supported languages: English, Chinese, Korean, Spanish and Portuguese



National Health Insurance Enrollment Procedures

Receive your health insurance card

- ▶ After you complete National Health Insurance enrollment procedures, the post office will deliver your health insurance card to your home. Please take delivery of your health insurance card directly from the mail carrier.
- ▶ Make sure to write the names of everyone living at the residence on your mailbox. If you live in an apartment/condominium, make sure that your room number is indicated on your mailbox.
- ▶ If you were not at home and could not receive your health insurance card, a delivery notice will be left in your mailbox. Please call the phone number written on the notice, or go to the post office to pick up your health insurance card.
- ▶ If you do not go to the post office during the holding period, your card will be sent to and held at the city office. Please make sure to pick it up there.

Send a notification if there are any changes, such as:

- ▶ When you move residences or return to your native country
- ▶ When you enroll in the health insurance plan at your place of work

Inquiries: Eligibility Subsection, National Health Insurance Section
Tel: 03-5246-1252

Pay your health insurance premiums

- ▶ After you complete enrollment procedures, payment slips stating your health insurance premiums will be mailed to your home. Please bring the payment slip with you and pay at a bank or convenience store by the deadline.
- ▶ If you are unable to pay your premiums for some reason, please consult the city office as soon as possible. If you do not, you may be unable to use your health insurance card.
- ▶ You can pay your health insurance premiums via bank transfer. Please inquire if you want to use this method.

Inquiries:

Health Insurance Premium Subsection,
National Health Insurance Section
Tel: 03-5246-1256

Enrolling in the National Pension Plan

The national pension plan supports those insured when they reach old age, or become disabled due to injury or illness, or and support their family after they die, as long as certain conditions are met. Residents eligible for the national pension are everyone between the ages of 20 and 59, including foreign residents, except for individuals enrolled in employee's pension programs at their place of employment. If the combined number of months for paid pension insurance premiums and insurance premium exemptions exceed 120 months (ten years), as a general rule the old-age basic pension begins from the age of 65.

Inquiries: National Pension Subsection, Residents' Affairs Section
Tel: 03-5246-1262

Note on the lump-sum withdrawal payment system:

To receive your old-age basic pension, you must have made insurance premium payments for a designated length of time as stated above. Foreign residents who return to their native countries without meeting their payment requirements may be able to receive a lump-sum payment if certain conditions are met, however.

Inquiries: Ueno Pension Office

Tel: 03-3824-2511

website: <http://www.nenkin.go.jp/international/index.html>



You can also access the website by scanning this code.

Becoming Members of the Worker Service Center —Taito City will help you with employee welfare benefits!

▽ What is the worker service center program?

It's an incorporated public interest foundation established through investments from Taito City that enhances employee welfare benefits for small and medium-sized enterprises with offices and/or employees in Taito City.

▽ Businesses that can enroll

- 1) Offices of small and medium-sized enterprises (less than 300 employees) and stores in Taito City (note: all employees must enroll)
- 2) A person living in Taito City and employed at a small or medium-sized enterprise or store outside Taito City

Note: In some cases you may not be able to enroll. For details, please inquire at the service center.

▽ Enrollment and membership fees

Enrollment fees One person ¥300

Membership fees One person ¥500 a month

▽ The following is a sampling of the services available to members (please confirm dates of sale at the service center)

Discount on amusement park free passes

- Tobu Zoo ¥1,200 (¥4,800)
- Toshimaen Adults ¥1,400 (¥4,200)
- Spa Resort Hawaiians ¥600 (¥3,500)

One-day hot springs experience

- Asakusa ROX Matsuri-yu Spa Adults ¥1,590 (¥2,700)
- Spa LaQua ¥1,600 (¥2,850)
- Tokyo-wide bath tickets (set of 10 tickets) ¥3,800 (¥4,300)

Movie tickets

- TOHO Cinemas ¥900 (¥1,800)

Note: Prices within parentheses are the regular prices.

Inquiries: 2-9-18 Kojima, Taito-ku 111-0056

Worker Service Center, Taito City Industrial Promotion Organization

Tel: 03-5829-4123

Working Together to Reduce Raw Garbage

Roughly 40 percent of burnable garbage from Taito City residences is raw garbage. Reducing the amount of garbage makes waste disposal easier and reduces waste-processing costs.

Don't buy too much

Buying a lot of food just because it's cheap and throwing away what you can't or don't eat is a waste. Please be careful about buying too much, especially perishable foods with short expiration dates.

Don't cut too much

Thinly peel the skin of vegetables to retain more of their nutrients while also reducing the amount of waste.

Don't moisten

If you wash vegetables with their skin, they absorb a lot of moisture, which is the cause of increased moisture in raw garbage. Please wash your vegetables only after you peel them.

Don't waste

Cook just what you can eat and what your body needs to avoid overeating.

Drain once

Before disposing of raw garbage, give it one final squeeze to reduce odors and weight.

Finally, dispose of it with your burnable garbage

Please bring your garbage to the designated location by 8 a.m. on the collection day.

Inquiries: Waste & Recycle Section, **Tel:** 03-5246-1291

Inquiry hours: 8:30 a.m. to 5 p.m. except for Saturdays, Sundays, national holidays and during the year-end/New Year's holiday period (unless otherwise stated)

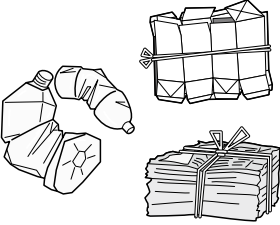


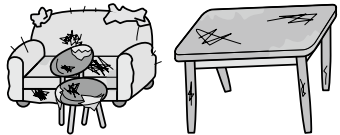
Follow the Garbage Disposal Rules!

► How to Dispose of Your Garbage

1. Separate your garbage into recyclable items, burnable garbage, unburnable garbage and large-sized garbage
2. Take your garbage out on the proper collection day, depending on the type of garbage and the region where you live
3. Bring your garbage to the designated location by the place you live

Dispose of recyclable items at the collection area. Other types of garbage are collected individually at each building.

Note: Contact the Waste Collection Office to receive a garbage collection calendar.

			<p>Large-sized garbage Home appliances, furniture, etc.</p>  <p>You must apply with the Large-size Waste Reception Center</p>
Recyclable items	Burnable garbage	Unburnable garbage	

► Fees

As a rule, recyclable items, burnable garbage and unburnable garbage from households are collected free of charge. However, if you dispose of four or more 45-liter bags of garbage at one time, you will be charged a fee for the fourth bag and any additional bags.

► Large-sized Garbage (from households only)

Oversized garbage is collected on a reservation basis, and fees are charged for pickup. You can make a reservation for this with the Large-size Waste Reception Center. Please make your reservation by telephone or via the Internet. Internet reservations can be made in Japanese, English, Chinese and Korean.

● Large-size Waste Reception Center

Tel: 03-5296-7000 (Monday through Saturday, 8 a.m. to 7 p.m.)

URL: <http://sodai.tokyokankyo.or.jp/>

Inquiries: About garbage, Taito City Waste Collection Office, **Tel:** 03-3876-5771

About recyclable items, Waste & Recycle Section, **Tel:** 03-5246-1291



Purchase Large-sized Garbage Disposal Tickets and attach them to your items before disposal.



You can also access the website by scanning this code.

About the Taito City Consumer Life Center

Ask for advice in these situations!

- If you have problems or suspicions when signing a contract or making a purchase
- If you are billed for something you didn't purchase
- If an accident occurs when using a product

● Who can use this service?

Anyone who lives, works or goes to school in Taito City

● Consultation days and hours

Monday through Friday
9 a.m. to 4 p.m.

● Consultation procedures

Call or come to the Taito City Consumer Life Center

Tel: 03-5246-1133

Location: Taito City Office 9F, Service Counter No. 7

● Consultation is free of charge. All matters are kept strictly confidential.

Inquiries: Residents' Counseling Section

Tel: 03-5246-1144

Service Counters Open on Second Sundays for Partial Services

Hours: 9 a.m. to 5 p.m.

Location: Taito City Office 1F

Available services:

- Matters related to family registry notifications
- Matters related to residence records, personal seal registration certificates and family registry certificates
- Matters related to notification of moving in/out, personal seal registration, and National Health Insurance enrollment
- Payments for taxes or health insurance premiums and matters related to motorcycle registration
- Matters related to childrearing allowances and medical subsidies
- Issuance of My Number cards
- Consultation on tax payments and health insurance premiums

Some Service Counters Have Extended Hours on Wednesdays

Extended hours: Until 7 p.m.

Available service counters: Taito City Office (4-5-6 Higashi-Ueno, Taito-ku)

- 1F: ○ Family Registration Residents' Service Section
- 2F: ○ National Health Insurance Section ○ Handicapped Welfare Section ○ Nursing Care Insurance Section ○ Senior Citizens' Welfare Section ○ Preventive Care & Community Support Section
- 3F: ○ Tax Administration Section ○ Collection Section ○ National Pension Subsection, Residents' Affairs Section
- 6F: ○ Child Care Section ○ Child-Rearing & Youth Support Section ○ After-School Affairs Subsection

Residents' Offices

- Seibu (West) Residents' Office (3-1-30 Shitaya, Taito-ku)
- Hokubu (North) Residents' Office (4-48-1 Asakusa, Taito-ku)
- Nambu (South) Residents' Office (1-10-12 Kotobuki, Taito-ku)

Taito City's Website Is Viewable in Various Languages

The Taito City website can be viewed in 103 languages.

Languages: English, Chinese (simplified and traditional), Korean, French, Indonesian, Malay, Thai, etc.

▶ **Procedure**

1. Click the "Multilingual" button on the upper right side of the website

"Multilingual" button



2. Choose a language

Note: Since the translation is automated, the text may not be entirely accurate in some cases.

Inquiries: Public Relations Section, **Tel:** 03-5246-1021

Find a Hospital

You can search for hospitals through Himawari, a service run by the Tokyo Metropolitan Government. They will tell you the location, telephone number, hours and medical departments of the hospital.

◇ **Telephone**

Languages: English, Chinese, Korean, Thai and Spanish

Hours: 9 a.m. to 8 p.m.

Tel: 03-5285-8181

◇ **Internet** (English, Chinese and Korean)

URL: <http://www.himawari.metro.tokyo.jp/>



You can also access the website by scanning this code.

Consultation about Life in Japan

▶ **Foreign Residents' Consultation Center**

If you have any problems or concerns, please feel free to consult the Foreign Residents' Consultation Center. You can talk to a consultant directly on the following days.

Language	Days	Hours
Chinese	First, second and third Thursdays	10 to 11:30 a.m.
English	First and third Thursdays	10 to 11:30 a.m.
Korean	First and third Thursdays	2 to 3:30 p.m.

Location: Residents' Consultation Office (Taito City Office 1F)

Inquiries: Residents' Consultation Office, Residents' Counseling Section

Tel: 03-5246-1025

Inquiry hours: 8:30 a.m. to 5 p.m. except for Saturdays, Sundays, national holidays and during the year-end/New Year's holiday period (unless otherwise stated)

Taito City Calligraphy Museum

This specialty museum was established by Western art painter and calligrapher Fusetsu Nakamura (1866–1943) in 1936, and features collections important to Chinese and Japanese calligraphy history research.

Exhibition

Commemorative exhibition for the renewal opening
The Works of Fusetsu Nakamura—As a Painter, As a Calligrapher—
September 26 (Wed.) to December 16 (Sun.) 2018

Visitor Information

The museum will be closed until September 25 due to construction.

- **Hours:** 9:30 a.m. to 4:30 p.m. (entry is possible up to half an hour before the museum closes)
- Closed on Mondays (or the following weekday if Monday is a holiday), the year-end/New Year's holidays, and special maintenance periods
- **Admission fee:** Adults and college students: ¥500 (¥300)

High school, junior high school and elementary school students: ¥250 (¥150)

Inside the parentheses is the group rate price for groups of over twenty people

- Every Saturday is free for elementary and junior high school students who live or attend school in Taito City, including their chaperones.
- People with a disability certificate or specific disease medical care eligibility certificate may enter for free. This includes their caretakers.



You can also access the website by scanning this code.

Address: 2-10-4 Negishi, Taito-ku 110-0003

Tel: 03-3872-2645

Website: <http://www.taitocity.net/zaidan/shodou/>

Access:

- A five-minute walk from JR Uguisudani Station's north exit
- A three-minute walk from Iriya-kuminkan-Negishi-bunkan bus stop (No. 22) on the Kita Megurin bus line

Note: There is no parking lot.

Sogakudo Concert Hall to Reopen in November

Sogakudo Concert Hall, once a school building of the former Tokyo Music School, is Japan's oldest Western-style concert hall. Closed for renovations as well as seismic retrofitting, the hall will reopen in November. Please come to enjoy a concert in this wonderful concert venue.

Public Opening in November (building and showroom opening)

• **Open:** Sunday, Tuesday and Wednesday. A celebration marking the hall's reopening will take place on Friday, November 2.

Note: If the hall is not being used on Thursdays, Fridays and Saturdays, it will be open for general visitors.

For details, please check the website: <http://www.taitocity.net/zaidan/sogakudou/>



You can also access the website by scanning this code.

• **Hours:** 9:30 a.m. to 4:30 p.m. (entry is possible until half an hour before closing)

• **Admission fee:** Adults ¥300 (¥200); elementary school, junior high school and high school students ¥100 (¥50)

Note: Inside the parentheses is the group rate price for groups of over twenty people

• **Closed:** Mondays (or the following weekday if Monday is a holiday)

Address: 8-43 Ueno Koen, Taito-ku

Tel: 03-3824-1988

Access:

- A ten-minute walk from JR Ueno Station (park exit)
- A fifteen-minute walk from Ueno Station on the Tokyo Metro Ginza and Hibiya lines
- A fifteen-minute walk from Keisei Ueno Station
- A one-minute walk from Kyu-tokyo-ongakugakko-sogakudo bus stop (No. 4) on the Tozai Megurin bus line

Join the Oedo Cleaning Squad!

Taito City supports the Oedo Cleaning Squad, which is made up of groups and individuals who periodically conduct volunteer cleaning and awareness activities in the city. The cleaning squad also participates in Taito City sponsored beautification campaigns.

Taito city rents out Oedo Cleaning Squad *hanten* coats to members to wear during cleanup activities. Wearing the matching *hanten* and doing activities together unifies the

squad, and shows people within and outside of our city that Taito City is a town determined to keep itself clean.

If you want to help make Taito City a cleaner place, how about becoming a member of the Oedo Cleaning Squad?

Inquiries: Floral Heart and Town Beautification Desk, Environment Section

Tel: 03-5246-1292

Enrolling Your Child in a Municipal Kindergarten or Licensed Kodomoen (Short-Time Childcare)

Children are recruited for the new school year in mid-November every year.

If there are vacancies, however, applications are accepted at any time.

For more information, please call the number below.

Inquiries:

Kindergartens:

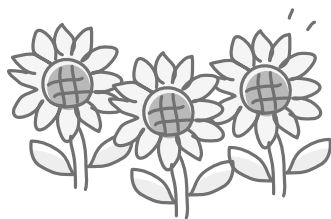
Educational Affairs Subsection, School Affairs Section,

Tel: 03-5246-1412

Licensed kodomoen:

Kodomoen Subsection, School Affairs Section,

Tel: 03-5246-1414



Enrolling Your Child in a Municipal Elementary or Junior High School

If your child has foreign nationality, has become a resident of Taito City, and you want to enroll him/her in a municipal elementary or junior high school, please come to the School Affairs Section of the Taito City Office (6F, Service Counter No. 2). Please be sure to bring **your residence card and your child's card as well.**

Note

1. If your child is a registered resident of Taito City and is already attending a municipal elementary school, you do not need to complete procedures for admission to a municipal junior high school.
2. If your child is attending an elementary school other than a Taito City municipal school and you want to enroll him/her in a municipal junior high school as a first-year student, please bring a **certificate verifying the prospect of your child graduating from elementary school.**

Please contact the number below if you have any questions.

Inquiries: Educational Affairs Subsection, School Affairs Section,
Tel: 03-5246-1412



Medical Certificates for Medical Subsidies for Children Program (Infant-Toddler Medical Certificate/Children's Medical Certificate) Being Renewed

Current medical certificates are valid through September 30, and the new medical certificates—which are glass green in color—will be mailed by September 29 (Sat.). If you already have one of these medical certificates, you do not need to apply for a new one. If you do not receive your certificate by October, please call the number below.

Note: If you do not have a medical certificate, please come to Taito City Office to apply for one.

Inquiries: Benefits Subsection, Child-Rearing & Youth Support Section,
Tel: 03-5246-1232



○ 医療証	
負担者番号	8 8 1 3 ○ ○ ○ ○
受給者番号	○ ○ ○ ○ ○ ○ ○ ○
乳幼児	氏名 台東 花子 男・女
	生年月日 平成 29 年 1 月 1 日生
保護者	住所 〒110-8615 台東区東上野4丁目5番6号
	氏名 台東 太郎
有効期間	平成 30 年 10 月 1 日から
	平成 31 年 9 月 30 日まで
<small>上記の者は、東京都台東区乳幼児医療費の助成に関する条例により医療費の一部を台東区が助成するものであることを証明する。</small> <small>東京都台東区長</small>	
交付年月日	平成 30 年 10 月 1 日