



TAITO CITY LIFE NEWS

2020.12 Vol. 21

Published by:

Residents' Affairs Section, Citizen's Division, Taito City Office, 4-5-6 Higashi-Ueno, Taito-ku 110-8615, Tel: 03-5246-1126

https://www.city.taito.lg.jp/index/kurashi/foreigner/life_news.html

The City Office offers multilingual interpretation services via tablet devices.

Please inquire at the service window about the procedures.

Supported languages: English, Chinese, Korean, Spanish, Portuguese, Vietnamese, Nepalese, Tagalog, Thai, French, Russian, and Hindi.



About Declaration of Resident Tax (special city tax and Tokyo metropolitan resident tax)

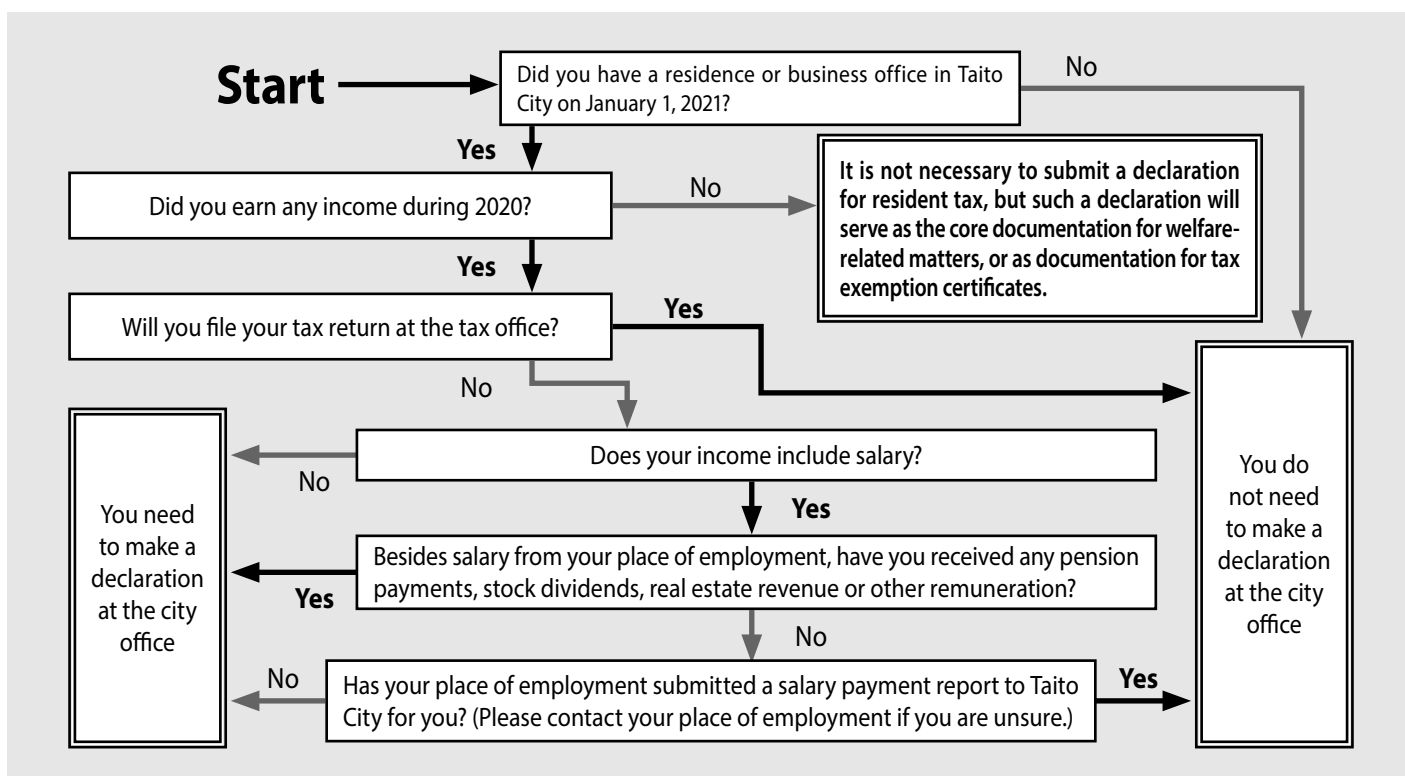
Your resident tax is the tax assessed by the city or municipality where you reside, and is the source of funding for administrative services the community conducts. All individuals having income of a certain level and above must pay tax.

Every year by March 15, you must submit a declaration of your income to the tax office or city office for the period from January 1 to December 31 of the previous year to the city or municipality where you resided on January 1 of that year. Your resident tax is calculated on the basis of the income declaration form you submitted.

Each year at the beginning of February, the city sends a declaration form to individuals who may need to make a tax declaration to the city office. Please fill in the necessary information and submit or mail it to the Taxation Subsection. Please contact the number below if you do not receive a declaration form or have any other questions.

Please note that if you submitted a declaration of your income tax to the tax office, you are not required to submit a resident tax declaration.

★Individuals who need to submit a declaration Please use the below chart as a reference



Inquiry: Taxation Subsection, Tax Administration Section, **Tel:** 03-5246-1103 to 1105

We've Created Pamphlets about Disaster Prevention and Crime Prevention. Please make use of them.

Please use the disaster preparedness map and flood hazard map to confirm evacuation routes.

① Taito City Safety and Security Handbook

This handbook provides countermeasures that your household can take to protect yourself in an earthquake, against crime and other situations in an easy-to-understand format. Please use this book to decide on which actions to take when disasters strike, to make routine preparations, and take countermeasures against various crimes, etc., in case the need arises.



There are versions in English, Chinese and Korean as well.

② Taito City Disaster Preparedness Map

Taito City's disaster prevention map shows temporary meeting places, evacuation centers, evacuation sites and disaster prevention facilities to use in case of an earthquake or other major disaster. Please be sure you know how to evacuate from your home.



There are English, Chinese, and Korean versions as well.

③ Taito City Flood Hazard Map/Kanda River Flood Hazard Map

The Taito City flood hazard map shows the extent of flooding when heavy rains cause the Arakawa River to overflow. It also shows the extent and depth of flooding that torrential rains can cause. The Kanda River flood hazard map shows the depth, extent and duration of flooding in the event of a Kanda River inundation. These flood hazard maps are useful for confirming evacuation routes and responding quickly in an emergency.



There are versions of the flood hazard maps in English, Chinese and Korean as well.

④ Taito City Landslide Hazard Map (part of the Yanaka and Ikenohata areas)

The landslide hazard map shows areas at risk and evacuation routes after landslides caused by earthquakes or ground loosening caused by typhoons, heavy rains, prolonged rains and other disasters. Please use these maps to respond quickly in an emergency.



Distribution location: Crisis and Disaster Management Section, Taito City Office 10F **Tel:** 03-5246-1092

Inquiry hours: 8:30 a.m. to 5 p.m. except for Saturdays, Sundays, national holidays and during the year-end/New Year's holiday period (unless otherwise stated)

Those Who Want to Study Japanese

These volunteer groups in Taito City offer Japanese-language study support:

Group name	Venue	Day of the week and time
Yamato-kotoba	Lifelong Learning Center 3-25-16 Nishi-Asakusa	Wednesdays 7 to 9 p.m.
Taito Nihongo Lessons*	Health Examination Center 1-8-8 Kita-Ueno	Thursdays 10 to 11:30 a.m.
Morning Class	Health Examination Center 1-8-8 Kita-Ueno	Saturdays 9:30 to 11:30 a.m.
Nihongo Gakushu Ichiba*	Social Education Center 6-16-8 Higashi-Ueno	Tuesdays 2:15 to 5 p.m.
	Lifelong Learning Center 3-25-16 Nishi-Asakusa	Thursdays 1 to 5 p.m.
		Tuesdays 6:30 to 8:30 p.m.
		Saturdays 1:30 to 5 p.m.
Tanoshii Nihongo Hiroba	Social Education Center 6-16-8 Higashi-Ueno	Fridays 2 to 4 p.m.
Asakusa Nihongo Dojo	Lifelong Learning Center 3-25-16 Nishi-Asakusa	Saturdays 1:30 to 4:30 p.m. (There is a break at 3 p.m.)

*Services are currently suspended to prevent the spread of COVID-19. Please call the number below regarding the resumption of activities. You can see the details of club activities from the QR code at right.



Japanese-Language Study Support Group

Inquiries: Residents' Affairs Section, **Tel:** 03-5246-1126

Please Have a Look at the Taito City Newsletter



Various notifications from the Taito City Office are written in the Taito City newsletter.

The newsletter can be viewed in various languages, such as English, Chinese (simplified and traditional),

Korean, Thai, and Indonesian if viewed from the city website or smartphone application "Catalog Pocket."

Note: To read via Catalog Pocket, search for "Taito City" after scanning the two-dimensional code and downloading the app.

Inquiries: Public Relations Section

Tel: 03-5246-1021



ios



Android

About the Taito City Consumer Life Center

Ask for advice in these situations!

- If there was something you couldn't understand when purchasing/signing a contract.
- If you are billed for something you didn't purchase
- If an accident occurs when using a product

● Who can use this service?

Anyone who lives, works or goes to school in Taito City

● Consultation days and hours

Monday through Friday
9 a.m. to 4 p.m.

● Consultation procedures

Call or come to the Taito City Consumer Life Center

Tel: 03-5246-1133

Location: Taito City Office 9F, Service Counter No. 7

- Consultation is free of charge. All matters are kept strictly confidential.

Inquiries: Residents' Counseling Section

Tel: 03-5246-1144

Service Counters Open on Second Sundays for Partial Services

Hours: 9 a.m. to 5 p.m.

Location: Taito City Office 1F

Services available:

- Matters related to family registry notifications
- Issuance of residence records, personal seal registration certificates, and family registry certificates
- Matters related to notifications of moving in/out and National Health Insurance enrollment
- Matters related to personal seal registration and annulment
- Payments for taxes or health insurance premiums and matters related to motorcycle registration
- Matters related to applications for childrearing allowances and medical subsidies for children
- Matters related to applications for and issuance of Individual Number cards
- Matters related to applications for and issuance of special permanent resident certificates
- Consultation on tax payments and health insurance premiums
- Matters related to issuance of residence tax (tax exemption) certificates
- Matters related to issuance of a *Mother and Child Health Handbook*
- Sales of one-month ticket, coupon tickets and one-day ticket for the Taito City Circular Route Bus, Megurin

Find a Hospital

You can search for hospitals through Himawari, a service run by the Tokyo Metropolitan Government. They will tell you the location, telephone number, hours and medical departments of the hospital.

◇ **Telephone**

Languages: English, Chinese, Korean, Thai and Spanish

Hours: 9 a.m. to 8 p.m.

Tel: 03-5285-8181

◇ **Internet** (English, Chinese and Korean)

URL: <https://www.himawari.metro.tokyo.jp/>



You can also access the website by scanning this code.

Taito City Night & Holiday Children's Clinic

Medical treatment is available for children fifteen years of age or younger for sudden illnesses that can be handled without hospitalization.

Location: Inside Eiju General Hospital, 2-23-16 Higashi-Ueno, Taito-ku

Tel: 03-3833-8381

Note: Please come to the emergency reception desk on the first floor.

Hours:

- Monday through Saturday (except on national holidays and during the yearend/New Year's holidays): 6:45 to 9:45 p.m. (treatment from 7 to 10 p.m.)
- Sundays, national holidays, *Obon* holidays (August 14-16), and during the yearend/New Year's holidays (December 29 to January 3): 8:45 a.m. to 9:45 p.m. (treatment from 9 a.m. to 10 p.m.)

Note: Please be sure to call before coming in, since we may ask visitors to come at a different time to prevent the spread of COVID-19.



You can also access the website by scanning this code.

Some Service Counters Have Extended Hours on Wednesdays

Extended hours: Until 7 p.m.

Available service counters:

Taito City Office (4-5-6 Higashi-Ueno, Taito-ku)

- 1F: ○ Family Registration Residents' Service Section
 ○ Nursing Care Insurance Section
 ○ Preventive Care & Community Support Section
 ○ Senior Citizens' Welfare Section
 ○ Handicapped Welfare Section
 ○ National Health Insurance Section
- 3F: ○ National Pension Subsection, Residents' Affairs Section
 ○ Collection Section ○ Tax Administration Section
- 6F: ○ Child-Rearing & Youth Support Section
 ○ After-School Affairs Subsection ○ Child Care Section

Residents' Offices

- Seibu (West) Residents' Office (3-1-30 Shitaya, Taito-ku)
- Nambu (South) Residents' Office (1-10-12 Kotobuki, Taito-ku)
- Hokubu (North) Residents' Office (4-48-1 Asakusa, Taito-ku)

Taito City's Website Is Viewable in Various Languages

The Taito City website can be viewed in 108 languages.

Languages: English, Chinese (simplified and traditional), Korean, French, Indonesian, Malay, Thai, etc.

▶ **Procedure**

1. Click the "Multilingual" button on the upper right side of the website

"Multilingual" button



2. Choose a language

Note: Since the translation is automated, the text may not be entirely accurate in some cases.

Inquiries: Public Relations Section, **Tel:** 03-5246-1021

Consultation about Life in Japan

▶ **Foreign Residents' Consultation Center**

If you have any problems or concerns, please feel free to consult the Foreign Residents' Consultation Center.

You can talk to a consultant directly on the following days.

Language	Days	Hours
Chinese	First, second and third Thursdays	10 a.m. to noon
English	First and third Thursdays	10 a.m. to noon
Korean	First and third Thursdays	2 to 4 p.m.

Location: Residents' Consultation Office (Taito City Office 1F)

Inquiries: Residents' Consultation Office, Residents' Counseling Section

Tel: 03-5246-1025

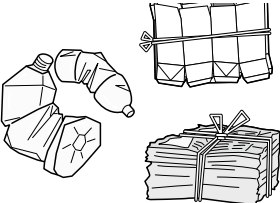


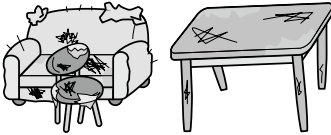
Follow the Garbage Disposal Rules!

► How to Dispose of Your Garbage

1. Separate your garbage into recyclable items, burnable garbage, unburnable garbage and large-sized garbage
2. Take your garbage out on the proper collection day, depending on the type of garbage and the region where you live
3. Bring your garbage to the designated location by the place you live by the designated time

Put your garbage out by 8 a.m. on the day of disposal. You cannot put it out the day before. Dispose of recyclable items at the collection area. Other types of garbage are collected individually at each building.

Note: Contact the Waste Collection Office to receive a garbage collection calendar.

 <p>Recyclable items</p>	 <p>Burnable garbage</p>	 <p>Unburnable garbage</p>	<p>Large-sized garbage Home appliances, furniture, etc.</p>  <p>You must apply with the Large-size Waste Reception Center</p>
---	---	---	---

► Fees

As a rule, recyclable items, burnable garbage and unburnable garbage from households are collected free of charge. However, if you dispose of four or more 45-liter bags of garbage at one time, you will be charged a fee for the fourth bag and any additional bags.

► Large-sized Garbage (from households only)

Oversized garbage is collected on a reservation basis, and fees are charged for pickup. You can make a reservation for this with the Large-size Waste Reception Center. Please make your reservation by telephone or via the Internet. Internet reservations can be made in Japanese, English, Chinese and Korean.

● Large-size Waste Reception Center

Tel: 03-5296-7000 (Monday through Saturday, 8 a.m. to 7 p.m.)

URL: <http://sodai.tokyokankyo.or.jp/>

Inquiries: About garbage, Taito City Waste Collection Office, **Tel:** 03-3876-5771

About recyclable items, Waste & Recycle Section, **Tel:** 03-5246-1291



You can also watch the video for more information (English only)



Purchase Large-sized Garbage Disposal Tickets and attach them to your items before disposal.

Come to Sogakudo Concert Hall

Sogakudo Concert Hall is Japan's oldest Western-style concert hall, and once belonged to the former Tokyo Music School. Come see this handsome and historic building and exhibition hall.

Open to the public (buildings and exhibition rooms)

Days: Sundays, Tuesdays and Wednesdays

Note: Also open to the public on Thursdays, Fridays and Saturdays when the hall is not in use.

Please see the website (<https://www.taitocity.net/zaidan/sougakudou/>) for more details.

Time: 9:30 a.m. to 4:30 p.m. (admission until 4 p.m.)

Admission fees: Adults: ¥300 (¥200), elementary, junior high and high school students: ¥100 (¥50)

Note: The prices in parentheses are for groups of twenty or more people.

Closed: Mondays (the next weekday if Monday is a national holiday), year-end/New Year's holidays (December 29 to January 3 of the following year), special maintenance periods

Location: 8-43 Ueno-Koen, Taito City

Access

- A ten-minute walk from JR Ueno Station (park exit)
- A fifteen-minute walk from Ueno Station on the Tokyo Metro Ginza and Hibiya lines
- A fifteen-minute walk from Ueno Station on the Keisei Line
- A one-minute walk from bus stop 5, Kyu-tokyo-ongakugakko-sogakudo (former Tokyo Music School's Sogakudo) on the Taito City circular route bus East-West Megurin (Sansakizaka round-trip route via Ueno Park)

Tel: 03-3824-1988



Why You Should Visit the Child/Family Assistance Centers

Child/family assistance centers are great places to play with your children, converse with other people, and relax and enjoy yourself.

Please feel free to consult center staff members about childrearing-related or other daily life issues. Depending on the nature of the consultation, you may be able to receive the support you need.



	Nihonzutsumi Child/Family Assistance Center	Taito Child/Family Assistance Center	Kotobuki Child/Family Assistance Center	Nihonzutsumi Child/Family Assistance Center, Yanaka Branch
Location	2-25-8 Nihonzutsumi, Taito-ku	1-25-5 Taito, Taito-ku	1-10-10 Kotobuki, Taito-ku	2-9-21 Yanaka, Taito-ku
Tel	03-5824-2535	03-3834-4577	03-3841-4631	03-3824-5532
FAX	03-3873-2617	03-3834-4426	03-3841-4643	03-3824-5535
E-mail	You can also ask for advice via the Taito City website: https://www.city.taito.lg.jp/index/kurashi/kosodate/mokutei/soudan/kosodatesougousoudan.html			
Consultation	In person (reservations required) and by phone: 9 a.m. to 5 p.m. Fax or email: On a 24-hour basis			

Do You Know about the Child Dining Rooms and Study Support Services Local Groups Offer?

NPOs and other local organizations provide “child dining rooms” and study support services for children and their families that tend to be isolated due to the parents’ work or other family circumstances. Children can freely stop by the facilities listed below, giving them a place to go in the community.

Group Name	Content	Location	Date and Time
NPO Network for Supporting Childrearing in Taito City	Study support	Kodomo Gokurakudo (Children’s Paradise Hall) (1 Kiyokawa)	Every Tuesday and Thursday
		Nippon Holiness Kyodan Ueno Church (4 Matsugaya)	Every Wednesday
Social Welfare Service Corporation Airindan	Study support (meals offered)	Former location of Hashiba Children’s Club	Every Monday, Wednesday, and Friday
Tokyo Health Cooperative Association	Study support	Yomise-dori Iko-no-ie (3 Yanaka)	Every Tuesday and Thursday
Taito City Kodomo-no-hanaya Association	Study support	Citron Leaf (2 Shitaya)	Every Monday to Saturday

Notes: All dining room services are currently suspended to prevent the spread of COVID-19.

The city supports the efforts made by all such groups.

What are “child dining rooms”?

Free, nutritionally balanced meals are provided for children who must eat by themselves for reasons such as the work schedules of their parents/guardians.

About study support

Places for studying are provided for children who do not have anyone to help their homework or who find studying by their own to be difficult. Free teaching is also offered.

Inquiry: Child-Rearing & Youth Support Section, **Tel:** 03-5246-1237