



TAITO CITY LIFE NEWS

Published by: Human Rights and Diversity Promotion Section, General Affairs Division, Taito City Office
4-5-6 Higashi-Ueno, Taito-ku 110-8615, Tel: 03-5246-1116

2022.12 Vol. 29

https://www.city.taito.lg.jp/kurashi/foreigner/jigyoannai/life_news.html

Please note that the content of the articles in this issue may change depending on the status of COVID-19 infections. We appreciate your understanding.

The City Office offers multilingual interpretation services via tablet devices.

Please inquire at the service window about the procedures.

The hours this service are available differ depending on the language.

<https://www.city.taito.lg.jp/kurashi/foreigner/sodan/sodan.html>

Supported languages: English, Chinese, Korean, Spanish, Portuguese, Vietnamese, Nepalese, Filipino (Tagalog), Thai, French, Russian, Hindi and Indonesian.



You can check the hours service is available here



Have You Gone through Health Checkups and Cancer Screenings?

Taito City offers health checkups and cancer screenings for city residents. The deadline for receiving these checkups/screenings is approaching fast, and you may not be able to make an appointment near the deadline since reservations may be at capacity.

If you are eligible and have not received a checkup, please make an appointment with a medical institution as soon as possible.



1. Types of Health Checkups, Eligibility and Deadlines

Checkup name	Eligibility	Deadline
Comprehensive health checkup	<ul style="list-style-type: none"> Taito City residents Residents 40 years old and above Residents enrolled in Taito City National Health Insurance, the Latter-Stage Elderly Health Care System, or who are receiving public financial assistance 	Until the end of January 2023
Basic dental health checkup	<ul style="list-style-type: none"> Taito City residents Those who are 30, 35, 40 to 55, 60, 65, 70, 75, 80 or 85 years old 	See the information sent by the city

If you do not know the contact information of a medical institution where you can receive checkups/screenings, please check the official city website or contact the Health Service Section (Tel: 03-3847-9481).

2. Cancer Screenings

Cancer screenings are available for Taito City residents

Checkup name	Eligibility	Deadline
Stomach cancer screenings	<ul style="list-style-type: none"> Residents 50 years old and above Residents who will reach an even age by the end of this fiscal year 	End of March 2023
Lung cancer screenings	<ul style="list-style-type: none"> Residents 40 years old and above 	
Colorectal cancer screenings	<ul style="list-style-type: none"> Residents 40 years old and above You can receive this exam along with the comprehensive health checkup 	
Cervical cancer screenings	<ul style="list-style-type: none"> Women 20 years old and above Women who will reach an even age by the end of this fiscal year 	
Breast cancer screenings	<ul style="list-style-type: none"> Women 40 years old and above Women who will reach an even age by the end of this fiscal year 	

Note: All eligible residents have been sent checkup tickets and information, so please check the documents you have received. The medical institutions available offer different types of checkups. For more details, please visit the official city website or check the information the city sent you.

About Declaration of Resident Tax (special city tax and Tokyo metropolitan resident tax)

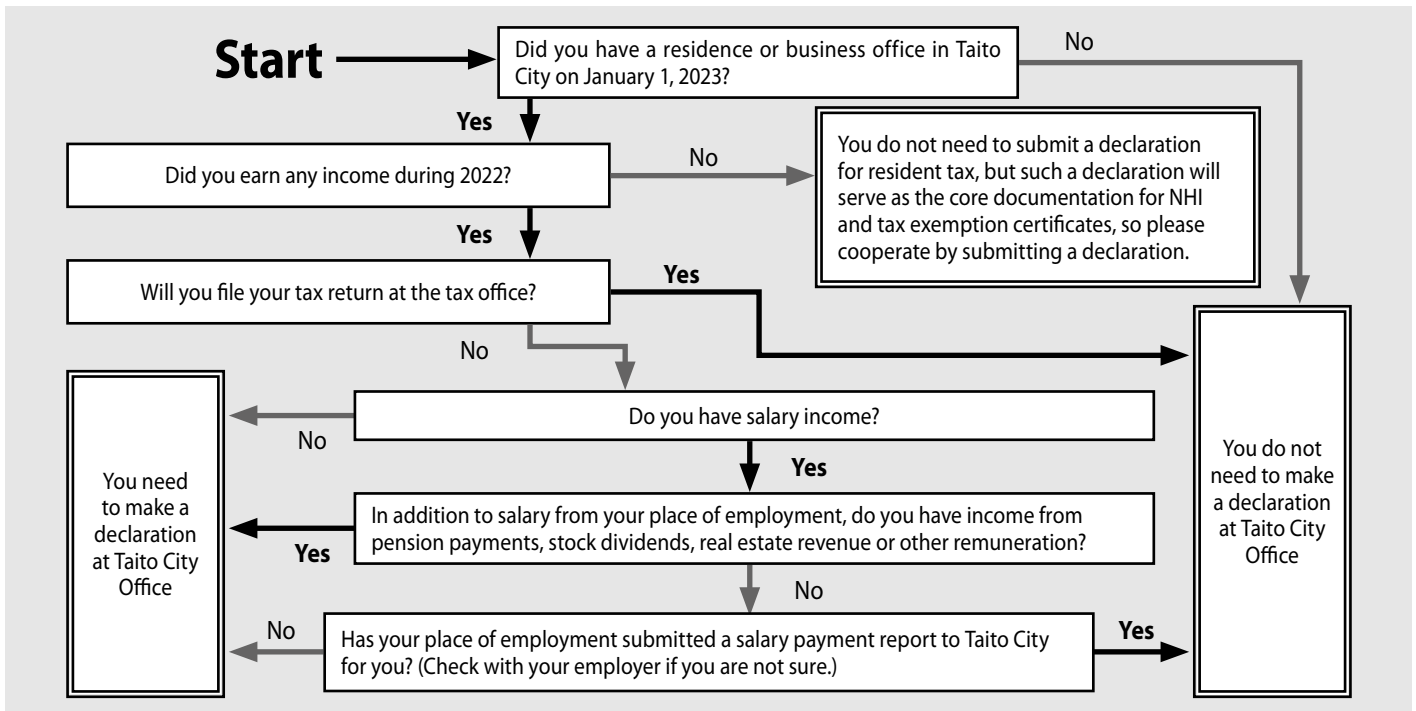
Your resident tax is the tax assessed by the city or municipality where you reside, and is the source of funding for administrative services the community conducts. All individuals having income of a certain level and above must pay tax.

Every year by March 15, you must submit a declaration of your income to the tax office or city office for the period from January 1 to December 31 of the previous year to the city or municipality where you resided on January 1 of that year. Your resident tax is calculated on the basis of the income declaration form you submitted.

Taito City sends a declaration form to individuals who may need to make a tax declaration to the city office. Please fill in the necessary information and submit or mail it to the Taxation Subsection. Please contact the number below if you do not receive a declaration form or have any other questions.

Please note that if you submitted a declaration of your income tax to the tax office, you are not required to submit a resident tax declaration.

★Individuals who need to submit a declaration Please use the below chart as a reference



Tax declarations are also accepted via postal mail. Please use the enclosed return envelope.

Inquiry: Taxation Subsection, Tax Administration Section, **Tel:** 03-5246-1103 to 1105

National Health Insurance

Who must enroll in National Health Insurance?

- Foreign residents who will be living in Japan for more than three months are also required to join a public insurance program such as National Health Insurance. If you are not covered by any public insurance, please contact us immediately. (Depending on your status of residence, you may not be able to enroll in National Health Insurance.)

Receive your health insurance card

- After you complete National Health Insurance enrollment procedures, the post office will deliver your health insurance card to your home. Please take delivery of your health insurance card directly from the mail carrier.
- Make sure to write the names of everyone living at the residence on your mailbox. If you live in an apartment/condominium, make sure that your room number is indicated on your mailbox.
- If you were not at home and could not receive your health insurance card, a delivery notice will be left in your mailbox. Please call the phone number written on the notice, or go to the post office to pick up your health insurance card.
- If you do not go to the post office during the holding period, your card will be sent to and held at the city office. Please make sure to pick it up there.

Send a notification if there are any changes, such as:

- When you move residences or return to your native country
- When you enroll in the health insurance plan at your place of work

Inquiries: Eligibility Subsection, National Health Insurance Section
Tel: 03-5246-1252

Pay your health insurance premiums

- After you complete enrollment procedures, payment slips stating your health insurance premiums will be mailed to your home. Please bring the payment slip with you and pay at a bank or convenience store by the deadline.
- If you are unable to pay your premiums for some reason, please consult the city office as soon as possible. If you do not pay, you may be unable to use your health insurance card, and your assets such as your savings and salary may even be seized. It may also affect your visa renewal status.
- You can pay National Health Insurance premiums via bank transfer. Please contact us if you would like to do so.

Inquiries: Health Insurance Premium Subsection, National Health Insurance Section **Tel:** 03-5246-1256

Inquiry hours: 8:30 a.m. to 5 p.m. except for Saturdays, Sundays, national holidays and during the year-end/New Year's holiday period (unless otherwise stated)

Those Who Want to Study Japanese

These volunteer groups in Taito City offer Japanese-language study support:

Group name	Venue	Day of the week and time
Yamato-kotoba Club	Lifelong Learning Center 3-25-16 Nishi-Asakusa	Wednesdays 7 to 9 p.m.
Taito Nihongo Lessons	Health Examination Center 1-8-8 Kita-Ueno	Thursdays 10 to 11:30 a.m.
Morning Class	Health Examination Center 1-8-8 Kita-Ueno	Saturdays 9:30 to 11:30 a.m.
Nihongo Gakushu Ichiba	Social Education Center 6-16-8 Higashi-Ueno	Tuesdays 1:30 to 3:30 p.m.
		Thursdays 1:30 to 3:30 p.m.
	Lifelong Learning Center 3-25-16 Nishi-Asakusa	Tuesdays 6 to 8 p.m.
		Saturdays 1:30 to 3:30 p.m.
Tanoshii Nihongo Hiroba	Social Education Center 6-16-8 Higashi-Ueno	Fridays 2 to 4 p.m.
Asakusa Nihongo Dojo	Lifelong Learning Center 3-25-16 Nishi-Asakusa	Saturdays 1:30 to 4:30 p.m. (There is a break at 3 p.m.)

Note: Due to the COVID-19 pandemic, these activities may be suspended or have shorter hours. Please contact the section noted below for updates.



Japanese-Language Study Support Group

Inquiries: Human Rights & Diversity Promotion Section, **Tel:** 03-5246-1116

Please Have a Look at the Taito City Newsletter



Various notifications from the Taito City Office are written in the Taito City newsletter.

The newsletter can be viewed in various languages, such as English, Chinese (simplified and traditional),

Korean, Thai, and Indonesian if viewed from the city website or smartphone application "Catalog Pocket."

Note: To read via Catalog Pocket, search for "Taito City" after scanning the two-dimensional code and downloading the app.

Inquiries: Public Relations Section

Tel: 03-5246-1021



Android



iOS

About the Taito City Consumer Life Center

Ask for advice in these situations!

- I encountered a problem or felt something was off when signing a contract or shopping.
- If you are billed for something you didn't purchase
- If an accident occurs when using a product

● Who can use this service?

Anyone who lives, works or goes to school in Taito City

● Consultation hours

9 a.m. to 4 p.m.

(Closed on Saturdays, Sundays, national holidays, and during the year-end/New Year's holidays.)

● Consultation procedures

Call or come to the Taito City Consumer Life Center

Tel: 03-5246-1133

Location: Taito City Office 9F, Service Counter No. 7

- Consultation is free of charge. All matters are kept strictly confidential.

Inquiries: Residents' Counseling Section

Tel: 03-5246-1144

Inquiry hours: 8:30 a.m. to 5 p.m. except for Saturdays, Sundays, national holidays and during the year-end/New Year's holiday period (unless otherwise stated)

Service Counters Open on Second Sundays for Partial Services

Hours: 9 a.m. to 5 p.m.

Location: Taito City Office 1F

Services available:

- Matters related to family registry notifications
- Issuance of residence records, personal seal registration certificates, and family registry certificates
- Matters related to notifications of moving in/out and National Health Insurance enrollment
- Matters related to personal seal registration and annulment
- Payments for taxes or health insurance premiums and matters related to motorcycle registration
- Matters related to various childrearing allowances and medical subsidies for children
- Matters related to applications for and issuance of Individual Number cards
- Matters related to applications for and issuance of special permanent resident certificates
- Consultation on tax payments and health insurance premiums
- Matters related to issuance of residence tax (tax exemption) certificates
- Matters related to issuance of a *Mother and Child Health Handbook*
- Sales of one-month ticket, coupon tickets and one-day ticket for the Taito City Circular Route Bus, Megurin

Find a Hospital

You can search for hospitals through Himawari, a service run by the Tokyo Metropolitan Government. They will tell you the location, telephone number, hours and medical departments of the hospital.

◇ **Telephone**

Languages: English, Chinese, Korean, Thai and Spanish

Hours: 9 a.m. to 8 p.m.

Tel: 03-5285-8181

◇ **Internet** (English, Chinese and Korean)

URL: <https://www.himawari.metro.tokyo.jp/>



You can also access the website by scanning this code.

Taito City Night & Holiday Children's Clinic

Medical treatment is available for children fifteen years of age or younger for sudden illnesses that can be handled without hospitalization.

Location: Inside Eiju General Hospital, 2-23-16 Higashi-Ueno, Taito-ku

Tel: 03-3833-8381

Note: Please come to the emergency reception desk on the first floor.

Hours:

- Monday through Saturday (except on national holidays and during the yearend/New Year's holidays): 6:45 to 9:45 p.m. (treatment from 7 to 10 p.m.)
- Sundays, national holidays, *Obon* holidays (August 14-16), and during the yearend/New Year's holidays (December 29 to January 3): 8:45 a.m. to 9:45 p.m. (treatment from 9 a.m. to 10 p.m.)

Note: As a measure against COVID-19, we may designate when you can visit the hospital or redirect you to a specialized medical facility, so please call in advance.



You can also access the website by scanning this code.

Some Service Counters Have Extended Hours on Wednesdays

Extended hours: Until 7 p.m.

Available service counters:

Taito City Office (4-5-6 Higashi-Ueno, Taito-ku)

1F: ○ Family Registration Residents' Service Section

2F: ○ Nursing Care Insurance Section

○ Preventive Care & Community Support Section

○ Senior Citizens' Welfare Section

○ Handicapped Welfare Section

○ National Health Insurance Section

3F: ○ National Pension Subsection, Residents' Affairs Section

○ Collection Section ○ Tax Administration Section

6F: ○ Child-Rearing & Youth Support Section

○ After-School Affairs Subsection ○ Child Care Section

Residents' Offices

○ Seibu (West) Residents' Office (3-1-30 Shitaya, Taito-ku)

○ Nambu (South) Residents' Office (1-10-12 Kotobuki, Taito-ku)

○ Hokubu (North) Residents' Office (4-48-1 Asakusa, Taito-ku)

Taito City's Website Is Viewable in Various Languages

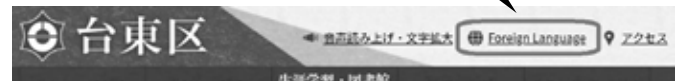
The Taito City website can be viewed in 108 languages.

Languages: English, Chinese (simplified and traditional), Korean, French, Indonesian, Malay, Thai, etc.

▶ **Procedure**

1. Click the "Foreign Language" button on the upper right side of the website

"Foreign Language" button



2. Choose a language

Inquiries: Public Relations Section, **Tel:** 03-5246-1021

Consultation about Life in Japan

▶ **Foreign Residents' Consultation Center**

If you have any problems or concerns, please feel free to consult the Foreign Residents' Consultation Center.

You can talk to a consultant directly on the following days.

Language	Days	Hours
Chinese	First, second and third Thursdays	10 a.m. to noon
English	First and third Thursdays	10 a.m. to noon
Korean	First and third Thursdays	2 to 4 p.m.

Location: Residents' Consultation Office (Taito City Office 1F)

Inquiries: Residents' Consultation Office, Residents' Counseling Section

Tel: 03-5246-1025

Inquiry hours: 8:30 a.m. to 5 p.m. except for Saturdays, Sundays, national holidays and during the year-end/New Year's holiday period (unless otherwise stated)

Come visit the Libraries!

Books in English, Chinese and Korean are available!

Libraries in Taito City have novels and other books written in English, Chinese and Korean.

You can also borrow books about Japan and Japanese-language learning materials.

Please come and visit the libraries.



Central Library Asakusabashi Branch

How to Use the Library

You need a library card to borrow items

You'll need a library card to borrow and reserve books, CDs and DVDs. You can get a card if you live, work or go to school in Taito City or live in one of the special wards of Tokyo (the twenty-three special cities in Tokyo).

Please come to the library counter with some personal identification that can verify your address (residence card, health insurance card, etc.). If you are working or going to school in Taito City, you will also need to bring a document that confirms your employment or student status.

Number of items and period you can borrow:

	Number of items	Lending period
Books and magazines	Up to fifteen	Two weeks
CDs	Up to three	Two weeks
DVDs and videos	Up to two	One week

For more information, please visit the library website or read the *Handbook for Foreign Residents: Everyday Living in Taito City*.

Inquiries:

Central Library, **Tel:** 03-5246-5911

Open Monday to Saturday from 9 a.m. to 8 p.m., and Sunday from 9 a.m. to 5 p.m.

(except for the year-end/New Year's holidays, the third Thursday of each month, and special maintenance periods)

Libraries that have foreign-language books

Library	Address	Phone no.
Central Library	3-25-16 Nishi-Asakusa (Lifelong Learning Center 1F, 2F)	5246-5911
Central Library Asakusabashi Branch	2-8-7 Asakusabashi (Asakusabashi City Residents' Hall 2F, 3F)	3863-0082
Central Library Yanaka Branch	5-6-5 Yanaka (Yanaka Disaster Prevention Community Center 3F)	3824-4041
Negishi Library	5-18-13 Negishi (Tokyo Metropolitan Housing Negishi 5-chome Apartment 2F)	3876-2101
Ishihama Library	1-35-16 Hashiba 3F, 4F	3876-0854

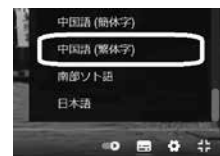
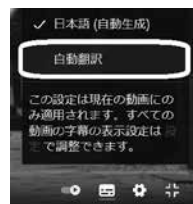
View the Taito City Official YouTube Channel

The public relations programs (news) and other videos the city produces are streaming on YouTube. You can display subtitles using YouTube's automatic translation function:

(1) Click on the caption  button on the bottom right of the video.



(2) Click on the  button, click on "Subtitles/CC," and then select "automatic translation" and choose a language.



Notes:

1. Only English-language translations are available when playing videos on smartphones and the like.
2. Since the channel uses YouTube's automatic translation function, the translation may not be accurate.
3. Depending on the video, the automatic translation function may not be available.

Inquiries: Public Relations Section, **Tel:** 03-5246-1041



Inquiry hours: 8:30 a.m. to 5 p.m. except for Saturdays, Sundays, national holidays and during the year-end/New Year's holiday period (unless otherwise stated)

Please Use the Pamphlets and Apps on Disaster Prevention and Crime Prevention We've Created

We've created a disaster preparedness map, flood and landslide hazard maps and disaster preparedness app to help you evacuate quickly, smoothly and safely during emergencies.

① Taito City Safety and Security Handbook

This handbook provides countermeasures that your household can take to protect yourselves in a natural disaster, against crime and in other situations in an easy-to-understand format. Please use it to determine which actions to take when a disaster such as an earthquake, storm or flood strikes, to make routine preparations, and to take countermeasures against various crimes, etc.



There are English, Chinese, and Korean versions as well.

② Taito City Disaster Preparedness Map (for earthquakes)

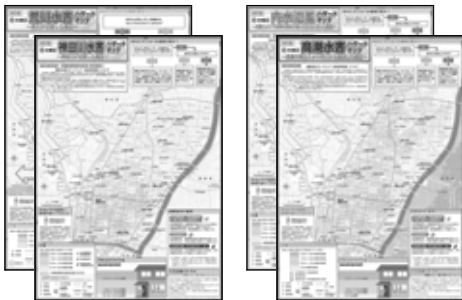
Taito City's disaster prevention map (for earthquakes) shows temporary meeting places, evacuation centers, evacuation sites and disaster prevention facilities to use in case of an earthquake or other major disaster. Please be sure you know how to evacuate from your home.



There are English, Chinese, and Korean versions as well.

③ Taito City Hazard Maps for Arakawa River and Kanda River Flooding/Inland Flooding/Storm Surge Flooding

These flood hazard maps show the wind and flood damage that may occur in Taito City, including the extent and depth of flooding that may occur for each type of disaster. Please also use these maps to identify evacuation sites and routes and take prompt action in an emergency.



These flood hazard maps are also available in English, Chinese and Korean.

④ Taito City Landslide Hazard Map (part of the Yanaka and Ikenohata areas)

The landslide hazard map shows areas at risk and evacuation routes after landslides caused by earthquakes or ground loosening caused by typhoons, heavy rains, prolonged rains and other disasters. Please use these maps to respond quickly in an emergency.



There are English, Chinese, and Korean versions as well.

⑤ Taito City Disaster Preparedness App: Taito Bosai

You can use this app on your smartphone to see whether evacuation centers are open and access other evacuation information from the city if an earthquake, storm or flood occurs. Taito Bosai also provides disaster preparedness maps and hazard maps as well as evacuation action guidance in the form of a chatbot.

Languages: English, Chinese and Korean



Android



iOS

Distribution location: Crisis and Disaster Management Section, Taito City Office 10F **Tel:** 03-5246-1092

Inquiry hours: 8:30 a.m. to 5 p.m. except for Saturdays, Sundays, national holidays and during the year-end/New Year's holiday period (unless otherwise stated)

▶ The next bulletin will be issued in March 2023.